

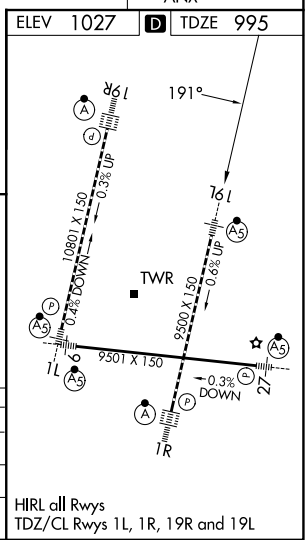
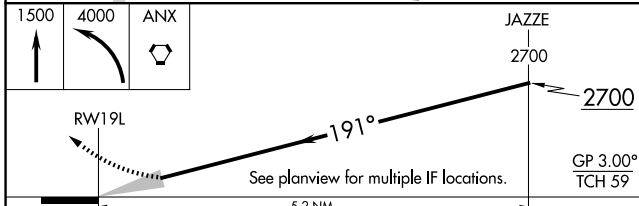
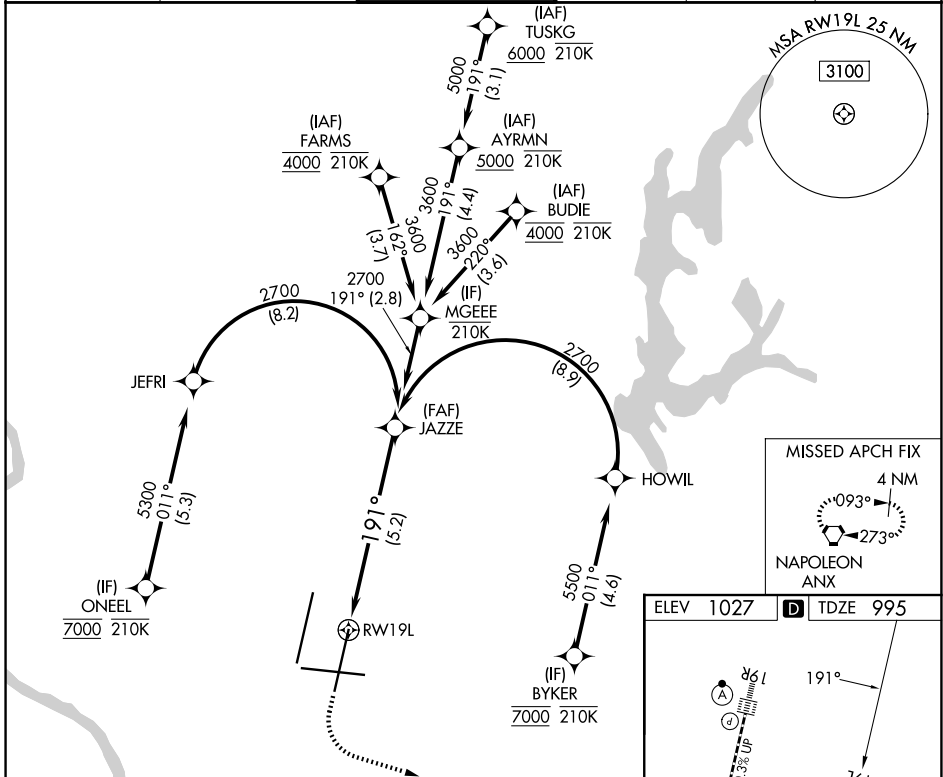
APP CRS	Rwy Ldg	9500
191°	TDZE	995
	Apt Elev	1027

RNAV (RNP) Z RWY 19L

KANSAS CITY INTL (MCI)

RNP AR APCH - GPS.		MALSR	MISSED APPROACH: Climb to 1500 then climbing left turn to 4000 direct ANX VORTAC and hold.
<p>▼ Use of FD or AP required during simultaneous operations. For uncompensated Baro-VNAV systems, procedure NA below -21°C or above 54°C. Simultaneous approach authorized, except for arrivals at ONEEL, BYKER, FARMS and BUDIE. For inop ALS, increase RNP 0.20 all Cats visibility to RVR 4500 and RNP 0.30 all Cats visibility to RVR 5500.</p>			

D-ATIS	KANSAS CITY APP CON	INTERNATIONAL TOWER	GND CON	CLNC DEL	CPDLC
128.375	120.95 318.1	128.2 254.25	121.8	135.7	



CATEGORY	A	B	C	D
RNP 0.20 DA		1310/24	315 (300-½)	
RNP 0.30 DA		1365/35	370 (400-¾)	

AUTHORIZATION REQUIRED

HIRL all Rwws
TDZ/CL Rwws 1L, 1R, 19R and 19L

NC-3, 11 JUN 2026 to 09 JUL 2026

NC-3, 11 JUN 2026 to 09 JUL 2026