


RNAV (RNP) Z RWY 27

KANSAS CITY INTL (MCI)

APP CRS	Rwy Ldg	9501
274°	TDZE	1027
	Apt Elev	1027

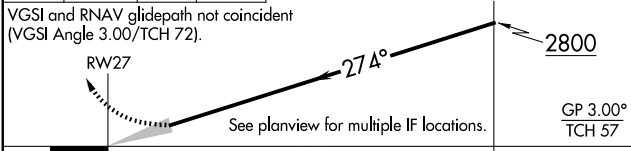
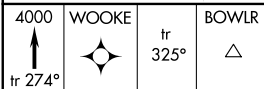
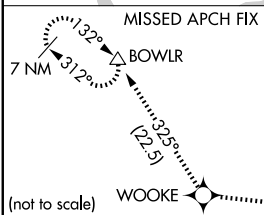
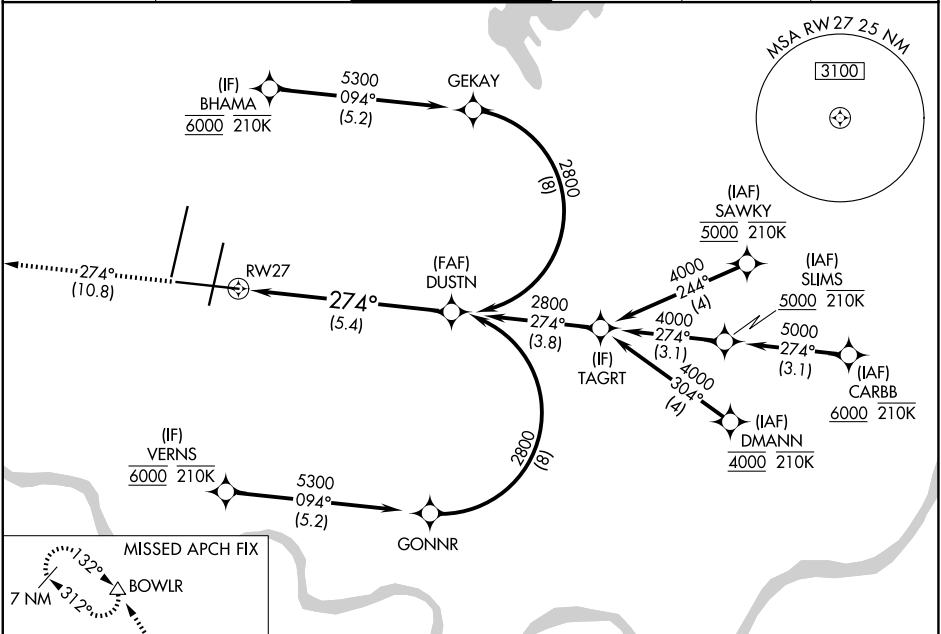
RADAR required for procedure entry. RNP AR APCH - GPS.

▼ For uncompensated Baro-VNAV systems, procedure NA below -19°C or above 54°C. For inop ALS, increase RNP 0.15 all Cats visibility to RVR 5500 and RNP 0.30 all Cats visibility to 1 3/8 SM.

MALSR 

MISSED APPROACH: Climb to 4000 on track 274° to WOOKIE and on track 325° to BOWLW and hold.

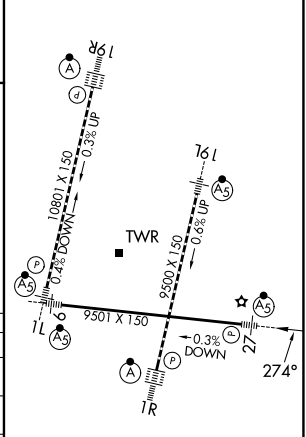
D-ATIS	KANSAS CITY APP CON	INTERNATIONAL TOWER	GND CON	CLNC DEL	CPDLC
128.375	120.95 318.1	128.2 254.25	121.8	135.7	



CATEGORY	A	B	C	D
RNP 0.15 DA		1371/30	344 (400-%)	
RNP 0.30 DA		1506/50	479 (500-1)	

AUTHORIZATION REQUIRED

ELEV 1027 **D** TDZE 1027



HIRL all Rwys
TDZ/CL Rwys 1L, 1R, 19R and 19L

NC-3, 11 JUN 2026 to 09 JUL 2026

NC-3, 11 JUN 2026 to 09 JUL 2026