

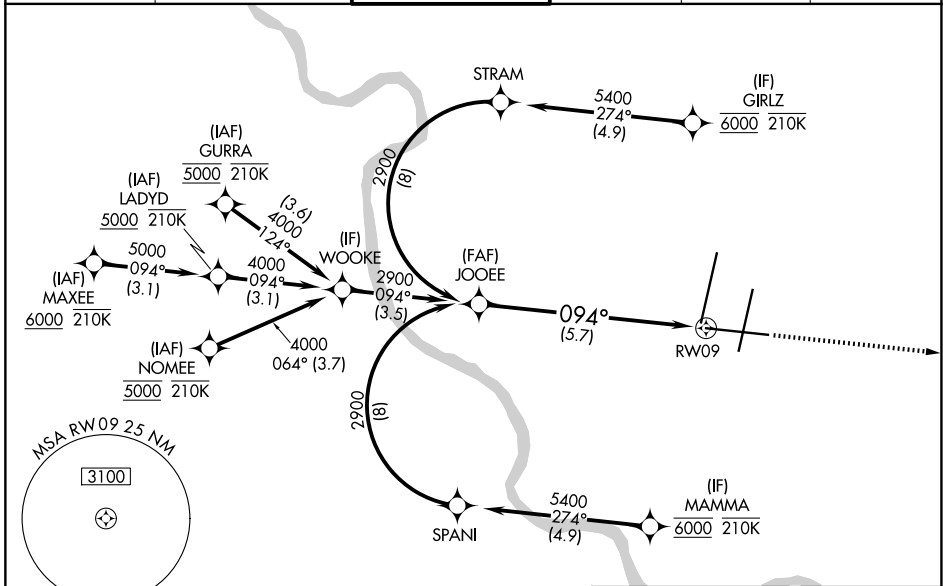
RNAV (RNP) Z RWY 9

KANSAS CITY INTL (MCI)

APP CRS 094°	Rwy Ldg TDZE Apt Elev	9501 1016 1027
------------------------	-----------------------------	---

RNP AR APCH - GPS.	MALSR 	MISSED APPROACH: Climb to 4000 direct DUSTN and on track 092° LYMES and hold.
<p>▼ For uncompensated Baro-VNAV systems, procedure NA below -19°C or above 54°C. For inop ALS, increase RNP 0.20 all Cats visibility to RVR 4500; increase RNP 0.30 all Cats visibility to RVR 6000.</p>		

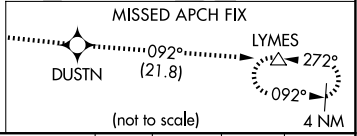
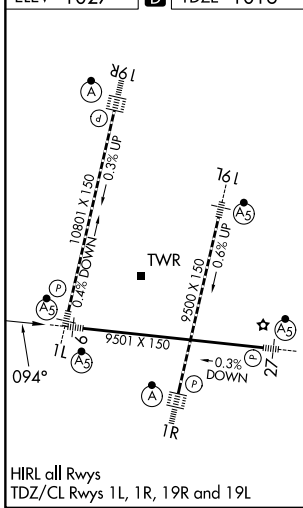
D-ATIS 128.375	KANSAS CITY APP CON 120.95 318.1	INTERNATIONAL TOWER 128.2 254.25	GND CON 121.8	CLNC DEL 135.7	CPDLC
--------------------------	--	--	-------------------------	--------------------------	-------



NC-3, 11 JUN 2026 to 09 JUL 2026

NC-3, 11 JUN 2026 to 09 JUL 2026

ELEV 1027	D	TDZE 1016
-----------	----------	-----------



JOOEE 2900 2900 GP 3.00° TCH 56 5.7 NM RWY 09	4000	DUSTN	tr 092°	LYMES
	See planview for multiple IF locations.			
CATEGORY	A	B	C	D
RNP 0.20 DA	1319/24		303 (300-½)	
RNP 0.30 DA	1418/40		402 (400-¾)	
AUTHORIZATION REQUIRED				