


WAAS CH 42808 W01B	APP CRS 011°	Rwy Ldg 10801 TDZE 1014 Apt Elev 1027
--	------------------------	--

RNAV (GPS) Y RWY 1L

KANSAS CITY INTL (MCI)

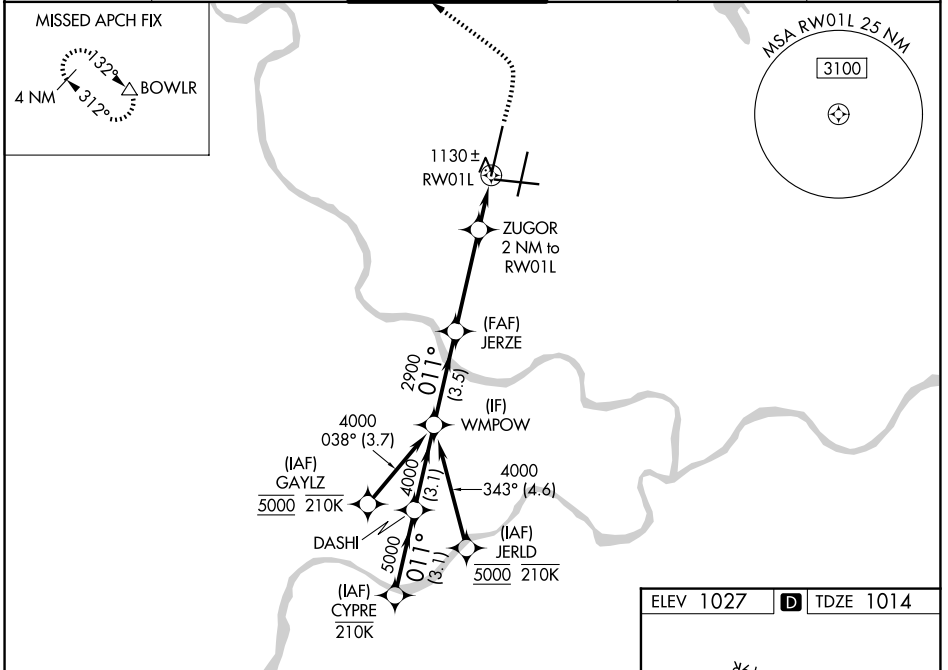
RNP APCH - GPS.

▼ Use of FD or AP required during simultaneous operations. LNAV procedure NA during simultaneous operations. For uncompensated Baro-VNAV systems, LNAV/VNAV NA below -19°C or above 54°C. For inop ALS, increase LNAV/VNAV all Cats visibility to RVR 4500 and LNAV Cats C/D visibility to RVR 5500. Simultaneous approach authorized except from GAYLZ and JERLD.

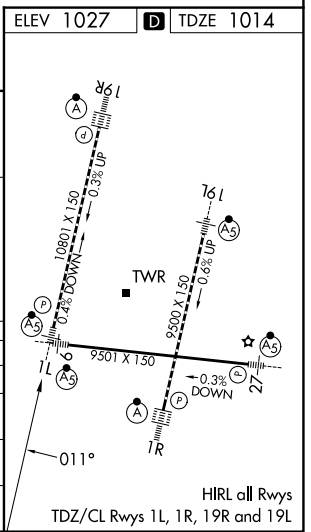
MALSR 

MISSED APPROACH: Climb to 2000 then climbing left turn to 4000 direct BOWL R and hold.

D-ATIS 128.375	KANSAS CITY APP CON 120.95 318.1	INTERNATIONAL TOWER 128.2 254.25	GND CON 121.8	CLNC DEL 135.7	CPDLC
--------------------------	--	--	-------------------------	--------------------------	-------



CYPRE	VGSI and RNAV glidepath not coincident (VGSI Angle 3.00/TCH 78).			2000	4000	BOWL R
DASHI	WMPOW	JERZE	ZUGOR			
6000	5000	4000	2900	2000	4000	BOWL R
GP 3.00°						
TCH 57						
	3.1 NM	3.1 NM	3.5 NM	3.7 NM	1.1 NM	0.9 NM
CATEGORY	A	B	C	D		
LPV DA	1214/18		200 (200-½)			
LNAV/VNAV DA	1328/24		314 (400-½)			
LNAV MDA	1380/24 366 (400-½)		1380/35 366 (400-¾)			
CIRCLING	1540-1 513 (600-1)		1540-1½ 513 (600-1½)		1580-2 553 (600-2)	



NC-3, 11 JUN 2026 to 09 JUL 2026

NC-3, 11 JUN 2026 to 09 JUL 2026