

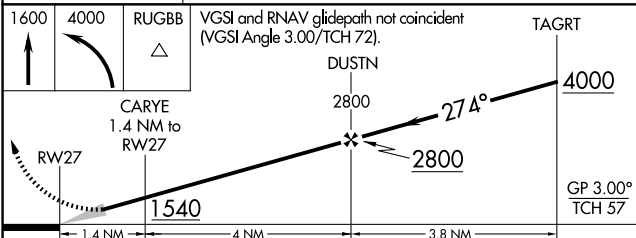
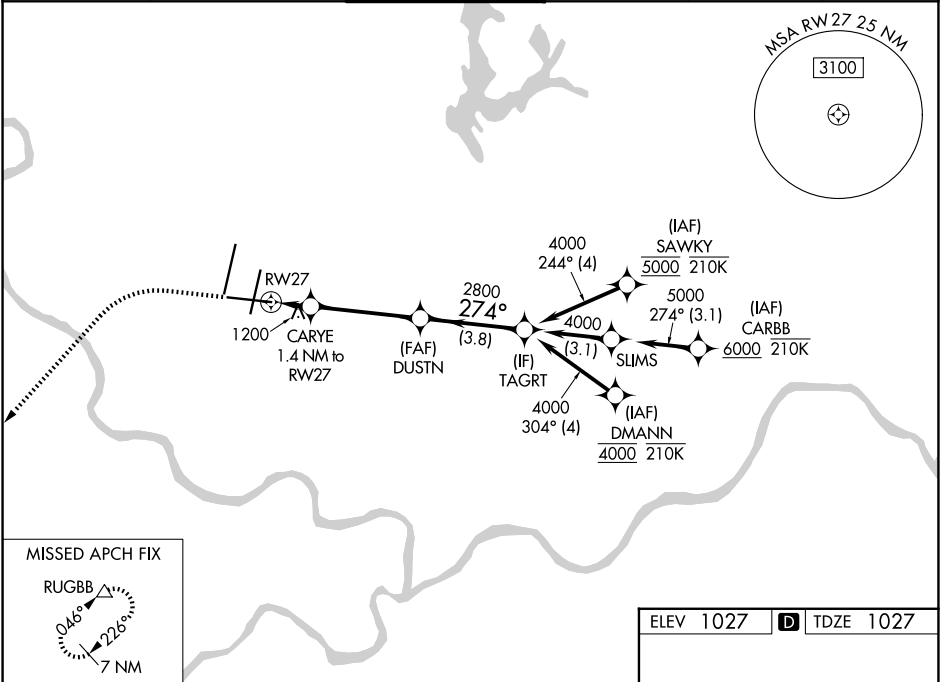
WAAS CH 82708 W27A	APP CRS 274°	Rwy Ldg TDZE 1027 Apt Elev 1027
--	------------------------	---

RNAV (GPS) Y RWY 27

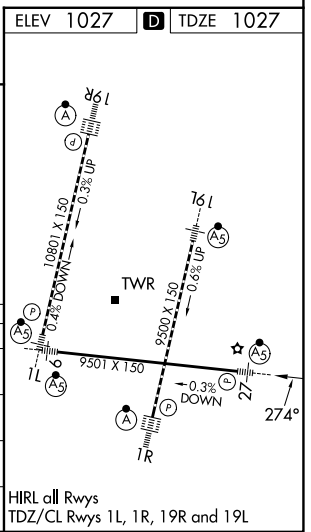
KANSAS CITY INTL (MCI)

RNP APCH - GPS. ▼ For uncompensated Baro-VNAV systems, LNAV/VNAV NA below -19°C or above 54°C. For inop ALS, increase LNAV/VNAV all Cats to 1 $\frac{3}{8}$ SM. *RVR 1800 authorized with use of FD or AP or HUD to DA.	MALSR 	MISSED APPROACH: Climb to 1600 then climbing left turn to 4000 direct RUGBB and hold.
---	-----------	---

D-ATIS 128.375	KANSAS CITY APP CON 120.95 318.1	INTERNATIONAL TOWER 128.2 254.25	GND CON 121.8	CLNC DEL 135.7	CPDLC
--------------------------	--	--	-------------------------	--------------------------	-------



CATEGORY	A	B	C	D
LPV DA*		1227/24	200 (200- $\frac{1}{2}$)	
LNAV/VNAV DA		1496/50	469 (500-1)	
LNAV MDA	1460/24	433 (500- $\frac{1}{2}$)	1460/40	433 (500- $\frac{3}{4}$)
CIRCLING	1540-1	513 (600-1)	1540-1 $\frac{1}{2}$ 513 (600- $\frac{1}{2}$)	1580-2 553 (600-2)



NC-3, 11 JUN 2026 to 09 JUL 2026

NC-3, 11 JUN 2026 to 09 JUL 2026