

WAAS CH 56608 W09A	APP CRS 094°	Rwy Ldg TDZE Apt Elev	9501 1016 1027
--	------------------------	-----------------------------	---

RNAV (GPS) Y RWY 9

KANSAS CITY INTL (MCI)

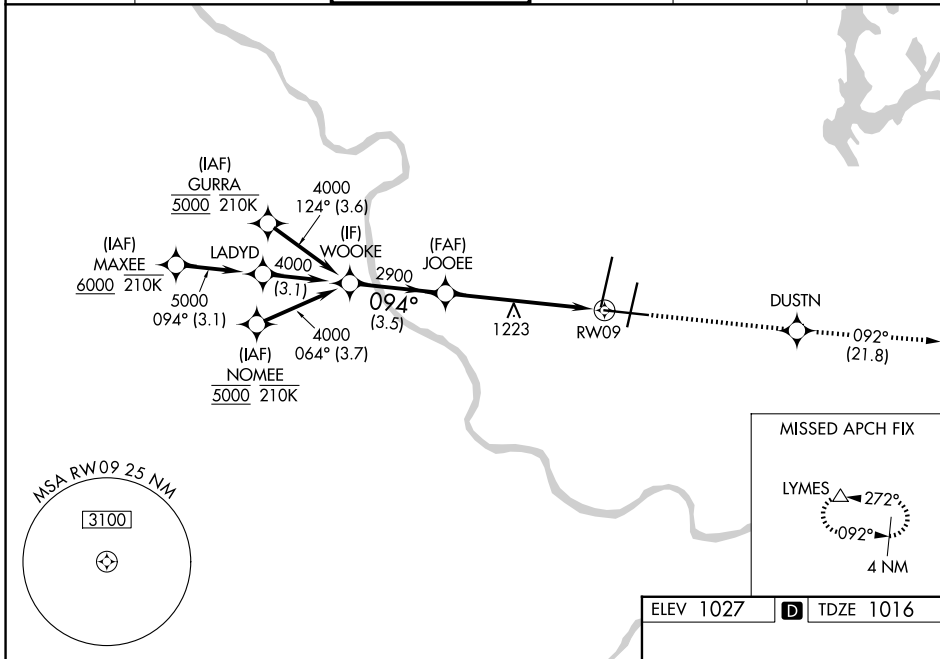
RNP APCH - GPS.

▼ For uncompensated Baro-VNAV systems, LNAV/VNAV NA below -19°C or above 54°C. For inop ALS, increase LPV all Cats and LNAV/VNAV all Cats visibility to RVR 4500, and increase LNAV Cats C/D visibility to 1 3/8 SM.

MALSR

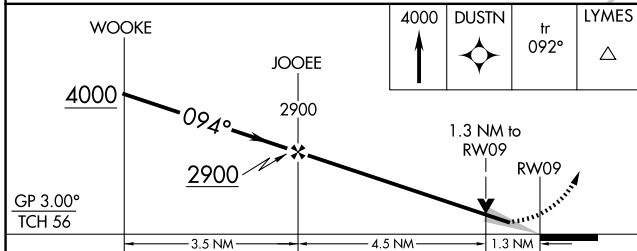
MISSED APPROACH: Climb to 4000 direct DUSTN and on track 092° to LYMES and hold.

D-ATIS 128.375	KANSAS CITY APP CON 120.95 318.1	INTERNATIONAL TOWER 128.2 254.25	GND CON 121.8	CLNC DEL 135.7	CPDLC
--------------------------	--	--	-------------------------	--------------------------	-------



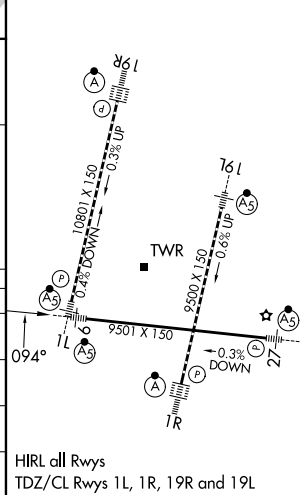
NC-3, 11 JUN 2026 to 09 JUL 2026

NC-3, 11 JUN 2026 to 09 JUL 2026



ELEV 1027	D TDZE 1016
-----------	--------------------

CATEGORY	A	B	C	D
LPV DA	1316/40		300 (300-3/4)	
LNAV/VNAV DA	1319/40		303 (300-3/4)	
LNAV MDA	1480/24	464 (500-1/2)	1480/50	464 (500-1)
CIRCLING	1540-1	513 (600-1)	1540-1 1/2 513 (600-1 1/2)	1580-2 553 (600-2)



HIRL all Rwys
TDZ/CL Rwys 1L, 1R, 19R and 19L