

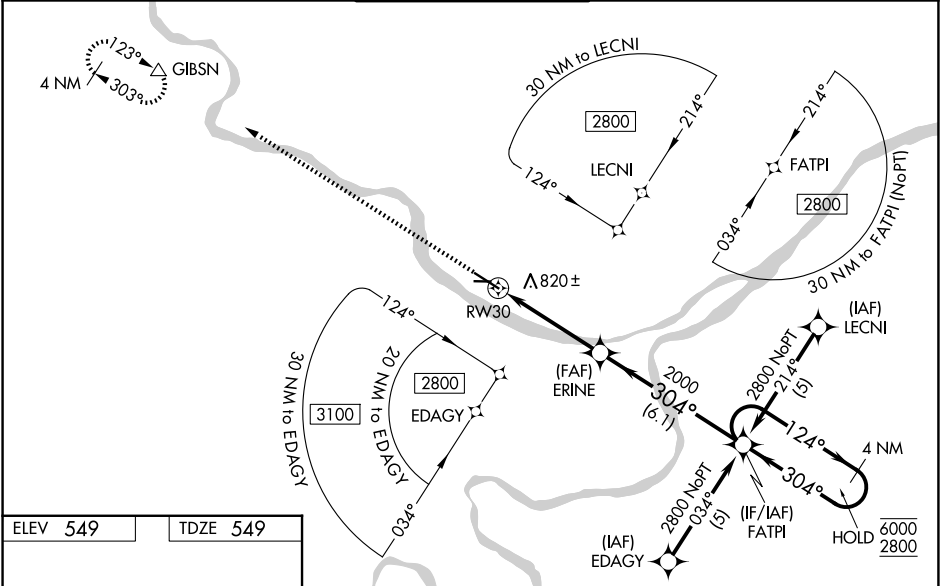
WAAS CH 86410 W30A	APP CRS 304°	Rwy Ldg TDZE Apt Elev	6000 549 549
--	------------------------	-----------------------------	---

RNAV (GPS) RWY 30

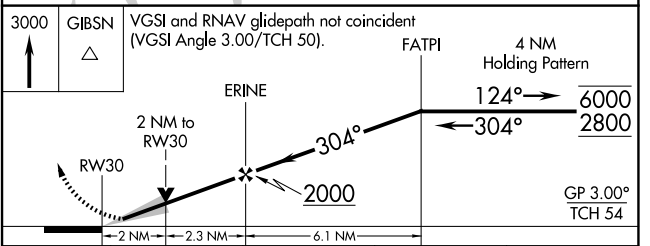
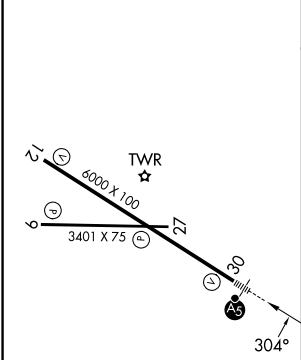
JEFFERSON CITY MEML (JEF)

RNP APCH - GPS.	MALSR 	MISSED APPROACH: Climb to 3000 direct GIBSN and hold.
⚠ For uncompensated Baro-VNAV systems, LNAV/VNAV NA below -16°C or above 54°C. Circling Rwy 9 NA at night. When local altimeter setting not received, use COU altimeter setting and increase LPV DA to 879 feet; increase LNAV/VNAV DA to 1402 feet and all visibilities ¼ SM. Increase all MDAs 80 feet and LNAV visibility Cats B/C/D ¼ SM, and Circling visibility Cats A/B/C ¼ SM. Baro-VNAV and VDP NA when using COU altimeter setting. For inop ALS increase LNAV/VNAV visibility all Cats to 2½ SM. For inop ALS when using COU altimeter setting, increase LPV visibility all Cats to 1 SM and increase LNAV visibility Cats C/D to 2½ SM.		

ASOS 133.625	MIZU APP CON 124.375 353.925	JEFFERSON CITY TOWER * 125.6 (CTAF) 0	GND CON 121.7	UNICOM 122.95
------------------------	--	---	-------------------------	-------------------------



ELEV 549	TDZE 549
----------	----------



CATEGORY	A	B	C	D
LPV DA		799-½	250 (300-½)	
LNAV/VNAV DA		1322-1¾	773 (800-1¾)	
LNAV MDA	1240-½	691 (700-½)	1240-½	691 (700-½)
CIRCLING	1280-1	731 (800-1)	1320-2¼	1560-3
			771 (800-2¼)	1011 (1100-3)

REIL Rwy 9, 12, and 27
MIRL Rwy 9-27
HIRL Rwy 12-30

NC-3, 11 JUN 2026 to 09 JUL 2026

NC-3, 11 JUN 2026 to 09 JUL 2026