

|   |                        |   |
|---|------------------------|---|
| VOR/DME RLY<br><b>114.8</b><br>Chan <b>95</b> | APP CRS<br><b>157°</b> | Rwy Idg <b>7000</b><br>TDZE <b>4202</b><br>Apt Elev <b>4252</b> |
|---|------------------------|---|

# VOR RWY 16

WORLAND MUNI (W.R.L)

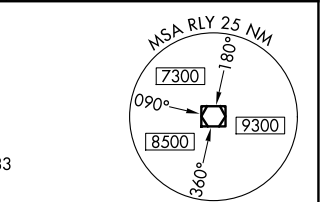
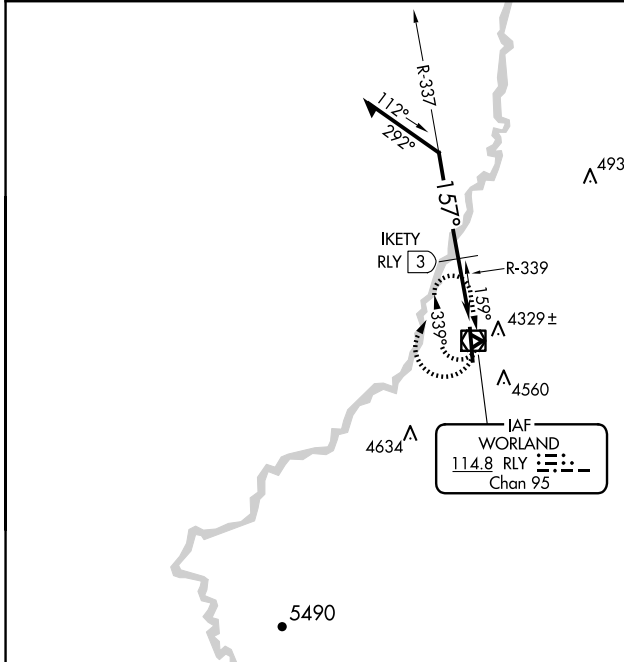
**⚠** When local altimeter setting not received, use Greybull altimeter setting: increase all MDAs 140 feet; all Cats, and Circling Cat C/D visibilities ½ SM. Helicopter visibility reduction below ¾ SM NA. VDP NA with Greybull altimeter setting.

**MISSED APPROACH:**  
Climbing right turn to 7000 in RLY VOR/DME holding pattern.

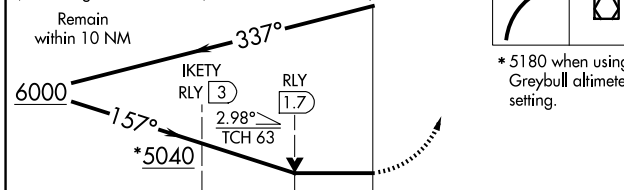
ASOS  
**135.475**

SALT LAKE CENTER  
**133.25 285.6**

UNICOM  
**123.05 (CTAF)**

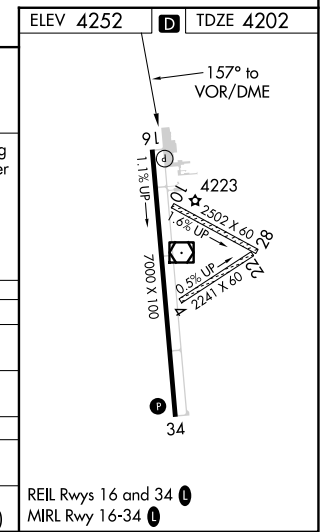


VGSI and descent angle not coincident (VGSI Angle 3.00/TCH 41).  
Remain within 10 NM



7000 RLY  
\*5180 when using Greybull altimeter setting.

| CATEGORY                  | A                     | B                       | C                       | D                       |
|---------------------------|-----------------------|-------------------------|-------------------------|-------------------------|
| S-16                      | 5040-1<br>838 (800-1) | 5040-1¼<br>838 (800-1¼) | 5040-2½                 | 838 (800-2½)            |
| CIRCLING                  | 5040-1<br>788 (800-1) | 5040-1¼<br>788 (800-1¼) | 5040-2½                 | 788 (800-2½)            |
| <b>IKETY FIX MINIMUMS</b> |                       |                         |                         |                         |
| S-16                      | 4600-1                | 398 (400-1)             | 4600-1¼                 | 398 (400-1¼)            |
| CIRCLING                  | 4920-1                | 668 (700-1)             | 4920-1¾<br>668 (700-1¾) | 5020-2½<br>768 (800-2½) |



NW-1, 11 JUN 2026 to 09 JUL 2026

NW-1, 11 JUN 2026 to 09 JUL 2026