

LOM CI <b>400</b>	APP CRS <b>337°</b>	Rwy Ldg <b>7203</b>
		TDZE <b>796</b>
		Apt Elev <b>799</b>

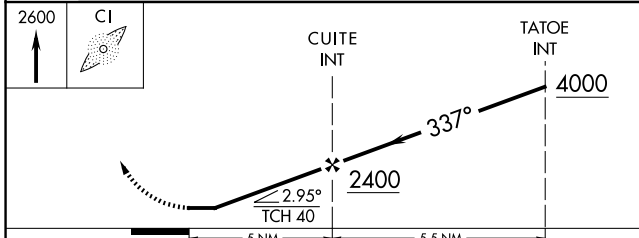
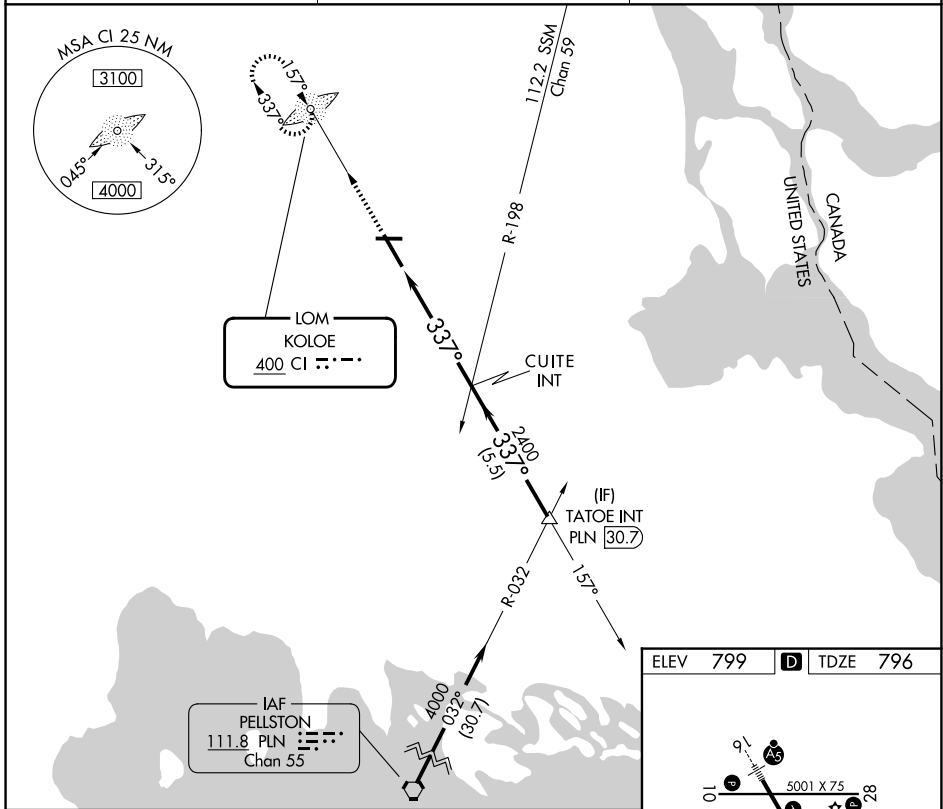
# NDB RWY 34

CHIPPEWA COUNTY INTL (CIU)

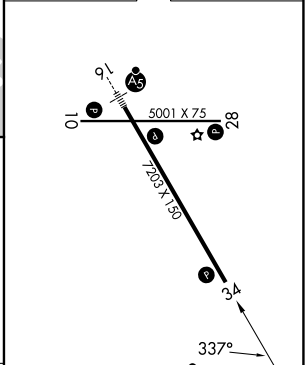
**⚠** When local altimeter setting not received, use Sault-Ste Marie Muni/Sanderson Fld altimeter setting and increase all MDA 60 feet and increase S-34 Cat C/D visibility to 1 3/8 .

**⚠ NA** MISSED APPROACH: Climb to 2600 direct KOLOE LOM and hold.

AWOS-3PT <b>127.575</b>	TORONTO CENTER <b>132.65 344.5</b>	UNICOM <b>123.0 (CTAF) 0</b>
----------------------------	---------------------------------------	---------------------------------



ELEV 799	<b>D</b>	TDZE 796
----------	----------	----------



CATEGORY	A	B	C	D
S-34	1220-1 424 (500-1)		1220-1 1/4 424 (500-1 1/4)	
CIRCLING	1260-1 461 (500-1)		1260-1 1/2 461 (500-1 1/2)	1360-2 561 (600-2)

REIL Rwy 10, 28 and 34	<b>0</b>
MIRL Rwy 10-28	<b>0</b>
HIRL Rwy 16-34	<b>0</b>
FAF to MAP 5 NM	
Knots	60 90 120 150 180
Min:Sec	5:00 3:20 2:30 2:00 1:40

EC-1, 11 JUN 2026 to 09 JUL 2026

EC-1, 11 JUN 2026 to 09 JUL 2026