

RNAV (GPS) RWY 10

CHIPPEWA COUNTY INTL (CIU)

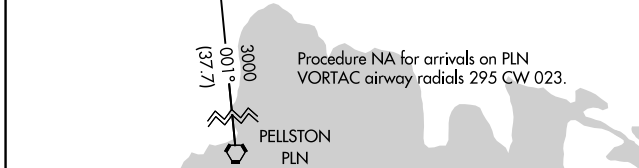
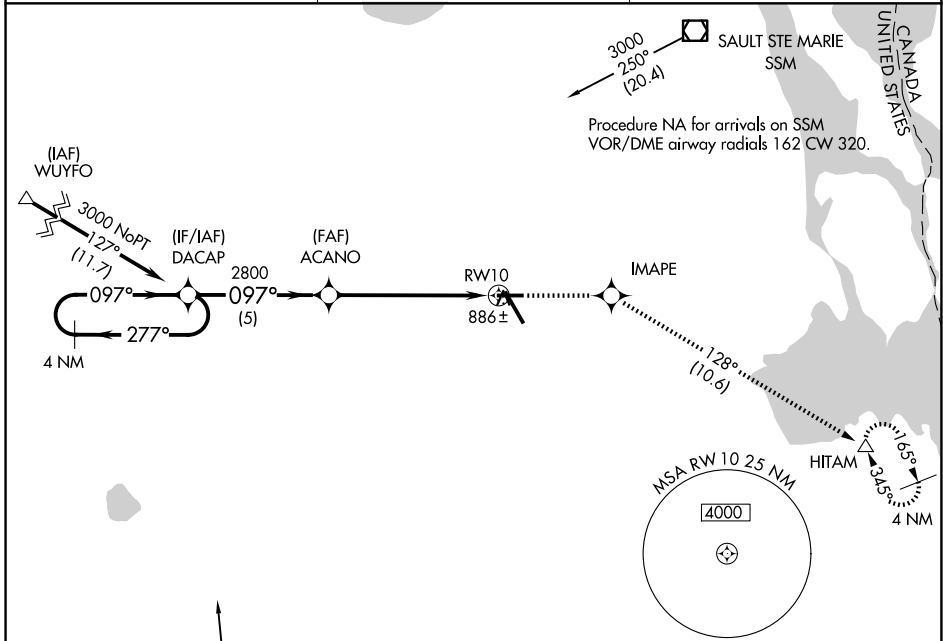
APP CRS	Rwy Ldg	5000
097°	TDZE	799
	Apt Elev	799

RNP APCH.

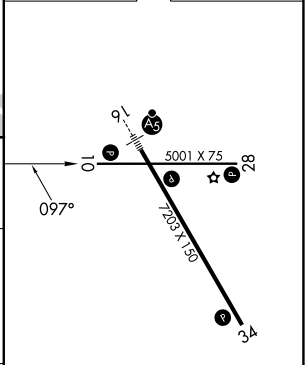
⚠ VDP NA with Sault Ste Marie altimeter setting. When local altimeter setting not received, use Sault Ste Marie Muni/Sanderson Fld altimeter setting; increase all MDA 60 feet, increase LNAV visibility Cat C/D and Circling Cat C ¼ SM.

MISSED APPROACH: Climb to 2900 direct IMAPE and track 128° to HITAM and hold.

AWOS-3PT	TORONTO CENTER	UNICOM
127.575	132.65 344.5	123.0 (CTAF) 0



ELEV 799	D TDZE 799
----------	-------------------



4 NM Holding Pattern	DACAP	2900	IMAPE	HITAM
3000	← 277°	↑	tr 128°	△
	097° →			
	ACANO			
	2800			
	1.5 NM to RW10			
	3.05° TCH 40			
	5 NM	4.5 NM	1.5	

CATEGORY	A	B	C	D
LNAV MDA	1320-1	521 (600-1)	1320-1½	521 (600-1½)
CIRCLING	1320-1	521 (600-1)	1320-1½	1360 - 2 561 (600-2)

REIL Rwy 10, 28 and 34 **L**

MIRL Rwy 10-28 **L**

HIRL Rwy 16-34 **L**

EC-1, 11 JUN 2026 to 09 JUL 2026

EC-1, 11 JUN 2026 to 09 JUL 2026