

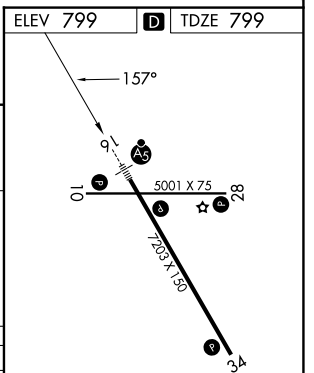
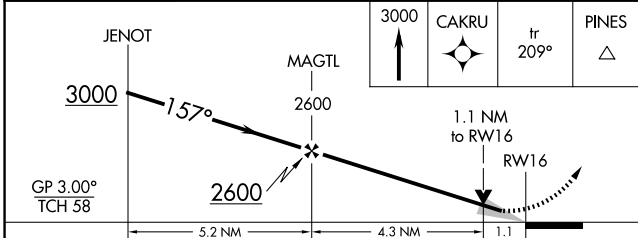
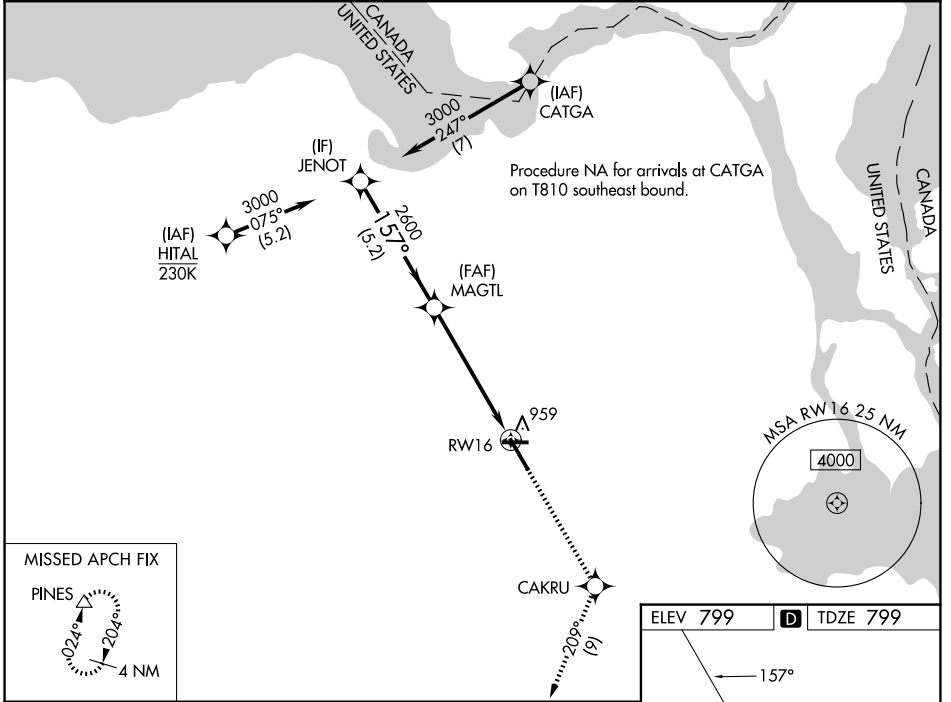
WAAS CH 69215 W16A	APP CRS 157°	Rwy Ldg TDZE Apt Elev	7203 799 799
----------------------------------------	------------------------	-----------------------------	-----------------------------------------

RNAV (GPS) RWY 16

CHIPPEWA COUNTY INTL (CIU)

RNP APCH - GPS.		MALSR	MISSED APPROACH: Climb to 3000 direct CAKRU and on track 209° to PINES and hold.
⚠ For uncompensated Baro-VNAV systems, LNAV/VNAV NA below -16°C or above 54°C. ⚠ For inop ALS, increase LNAV/VNAV all Cats visibility to 1 SM.			

AWOS-3PT 127.575	TORONTO CENTER 132.65 344.5	UNICOM 123.0 (CTAF) U
----------------------------	---------------------------------------	---------------------------------



CATEGORY	A	B	C	D
LPV DA		999-1/2	200 (200-1/2)	
LNAV/VNAV DA		1140-5/8	341 (400-5/8)	
LNAV MDA	1220-1/2	421 (500-1/2)	1220-3/4	421 (500-3/4)
CIRCLING	1260-1	461 (500-1)	1260-1 1/2	1360-2
			461 (500-1 1/2)	561 (600-2)

REIL Rwy 10, 28 and 34 U
 MIRL Rwy 10-28 U
 HIRL Rwy 16-34 U

EC-1, 11 JUN 2026 to 09 JUL 2026

EC-1, 11 JUN 2026 to 09 JUL 2026