

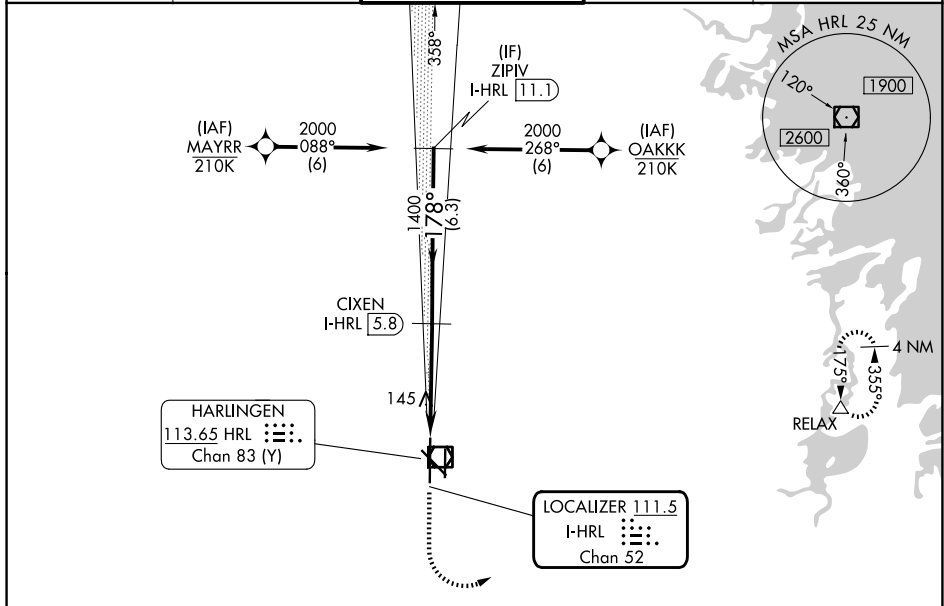
LOC/DME I-HRL 111.5 Chan 52	APP CRS 178°	Rwy Ldg 9400 TDZE 35 Apt Elev 36
---	------------------------	---

ILS RWY 18R (SA CAT I & II)

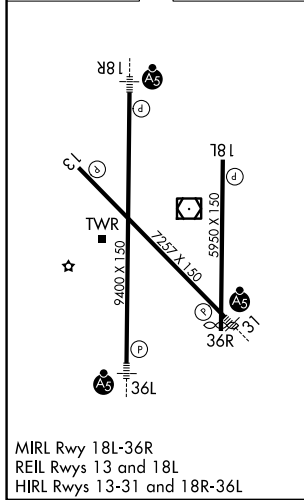
VALLEY INTL (HRL)

RNP APCH - GPS.		MALSR 	MISSED APPROACH: Climb to 500 then climbing left turn to 2000 direct RELAX and hold.	
Requires specific OPSPEC, MSPEC, or LOA approval. Procedure NA when tower closed.				

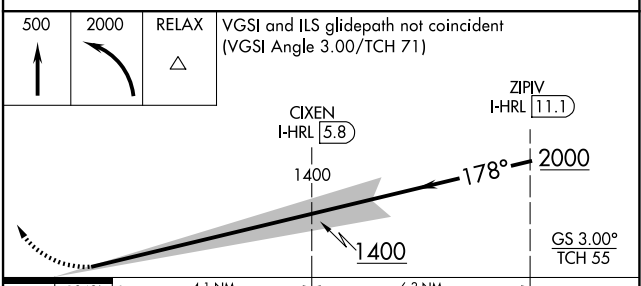
ATIS 124.85	VALLEY APP CON 120.7 279.5	HARLINGEN TOWER ★ 119.3 (CTAF) 317.6	GND CON 121.7	UNICOM 122.95
-----------------------	--------------------------------------	--	-------------------------	-------------------------



ELEV 36	D	TDZE 35
----------------	----------	----------------



MIRL Rwy 18L-36R
 REIL Rwys 13 and 18L
 HIRL Rwys 13-31 and 18R-36L



	4.1 NM	6.3 NM	
CATEGORY	A	B	C
S-ILS 18R	SA CAT I	RA 153/14	DA 185
S-ILS 18R	SA CAT II	RA 104/12	DA 135

CATEGORY I & II ILS - SPECIAL AIRCREW & AIRCRAFT CERTIFICATION REQUIRED

SC-3, 11 JUN 2026 to 09 JUL 2026

SC-3, 11 JUN 2026 to 09 JUL 2026