

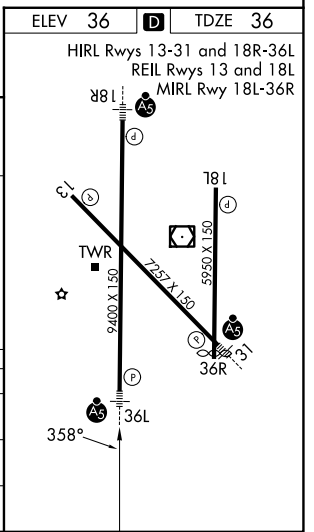
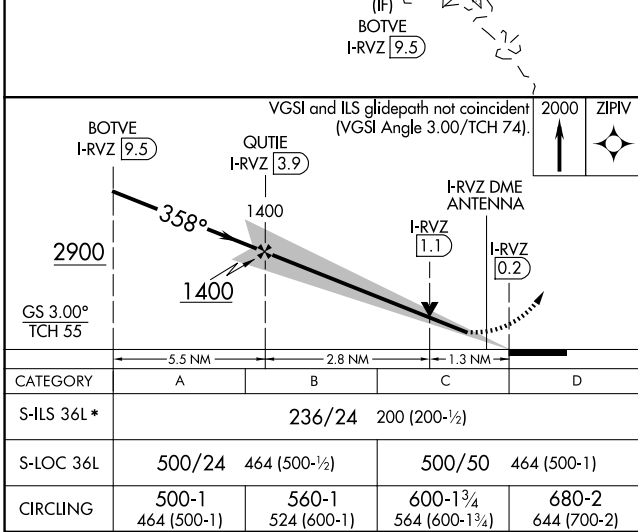
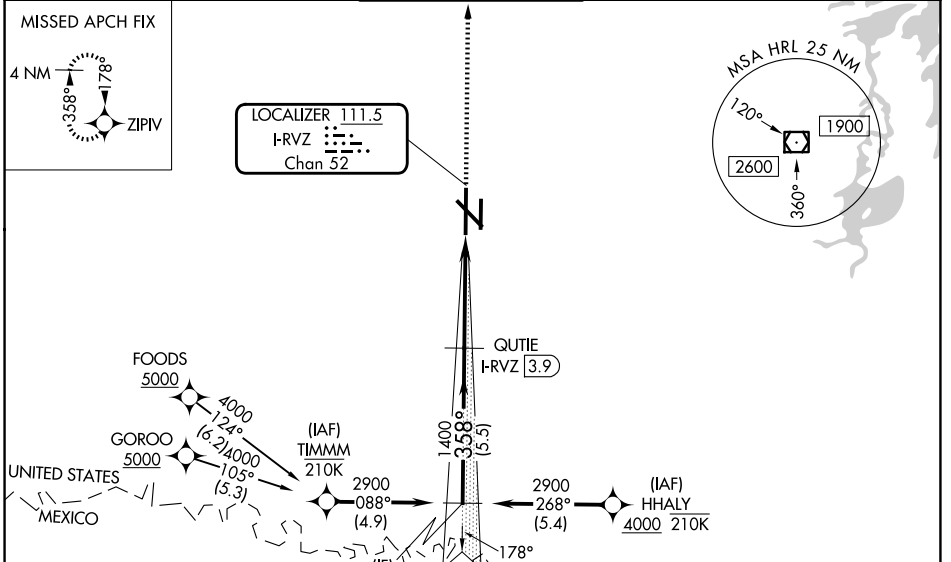
| | | |
|---|------------------------|---|
| LOC/DME I-RVZ 111.5 Chan 52 | APP CRS 358° | Rwy Ldg 9400 TDZE 36 Apt Elev 36 |
|---|------------------------|---|

ILS or LOC RWY 36L

VALLEY INTL (HRL)

| | | | |
|---|--|-------|---|
| RNP APCH - GPS. | | MALSR | MISSED APPROACH: Climb to 2000 direct ZIPIV and hold. |
| DME required. | | | |
| ▼ VDP NA when using PIL altimeter setting. When local altimeter setting not received, use Port label altimeter setting and increase S-ILS 36L DA to 278 feet; increase all MDAs 60 feet and S-LOC 36L Cats C and D visibilities to RVR 5500 and Circling visibility Cats C and D ½ SM. For inop ALS, increase S-LOC 36L Cat C/D visibility to 1 ½ SM. ▲ * RVR 1800 authorized with use of FD or AP or HUD to DA (NA when using PIL altimeter setting). | | | |

| | | | | |
|-----------------------|--------------------------------------|--|-------------------------|-------------------------|
| ATIS 124.85 | VALLEY APP CON 120.7 279.5 | HARLINGEN TOWER ★ 119.3 (CTAF) 317.6 | GND CON 121.7 | UNICOM 122.95 |
|-----------------------|--------------------------------------|--|-------------------------|-------------------------|



| | | | | |
|-------------|----------------------|----------------------|------------------------|----------------------|
| CATEGORY | A | B | C | D |
| S-ILS 36L * | 236/24 200 (200-½) | | | |
| S-LOC 36L | 500/24 | 464 (500-½) | 500/50 | 464 (500-1) |
| CIRCLING | 500-1 464 (500-1) | 560-1 524 (600-1) | 600-1¾ 564 (600-1¾) | 680-2 644 (700-2) |

SC-3, 11 JUN 2026 to 09 JUL 2026

SC-3, 11 JUN 2026 to 09 JUL 2026