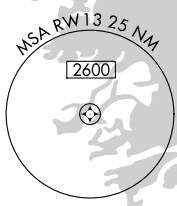
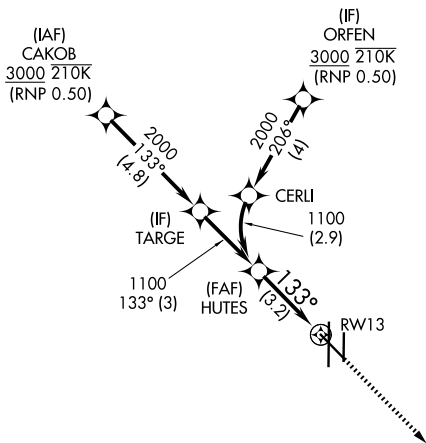


APP CRS	Rwy Ldg	<b>7257</b>
<b>133°</b>	TDZE	<b>35</b>
	Apt Elev	<b>36</b>

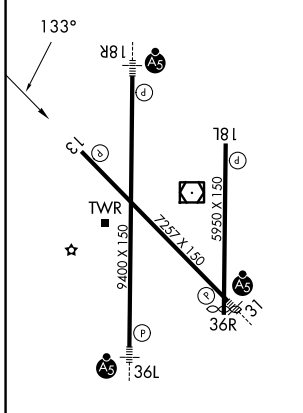
# RNAV (RNP) Z RWY 13

VALLEY INTL (HRL)

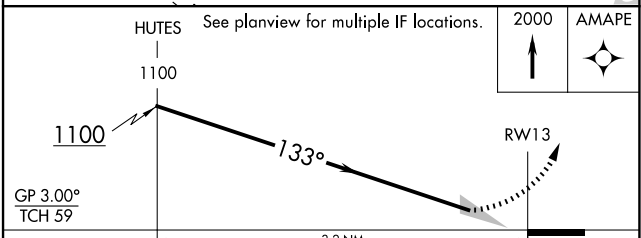
RNP AR APCH - GPS.		MISSED APPROACH: Climb to 2000 direct AMAPE and hold.		
<p><b>⚠</b> For uncompensated Baro-VNAV systems, procedure NA below -1°C or above 54°C. When local altimeter setting not received, procedure NA.</p>				
ATIS	VALLEY APP CON	HARLINGEN TOWER ★	GND CON	UNICOM
<b>124.85</b>	<b>120.7 279.5</b>	<b>119.3 (CTAF) 0 317.6</b>	<b>121.7</b>	<b>122.95</b>



ELEV	<b>36</b>	<b>D</b>	TDZE	<b>35</b>
------	-----------	----------	------	-----------



MIRL Rwy 18L-36R  
 REIL Rwys 13 and 18L  
 HIRL Rwys 13-31 and 18R-36L



CATEGORY	A	B	C	D
RNP 0.15 DA		285- <sup>3</sup> / <sub>4</sub>	250 (300- <sup>3</sup> / <sub>4</sub> )	
RNP 0.30 DA		342- <sup>7</sup> / <sub>8</sub>	307 (400- <sup>7</sup> / <sub>8</sub> )	

**AUTHORIZATION REQUIRED**

SC-3, 11 JUN 2026 to 09 JUL 2026

SC-3, 11 JUN 2026 to 09 JUL 2026