

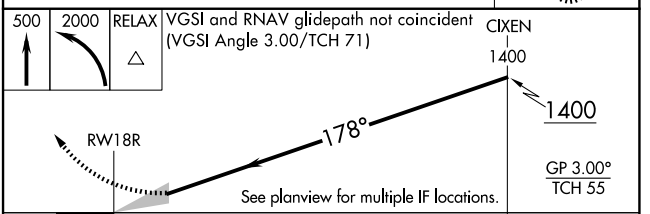
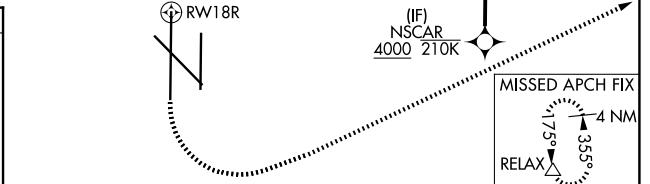
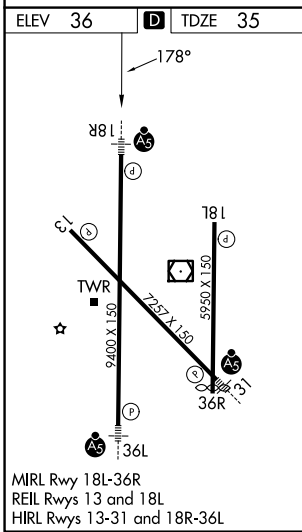
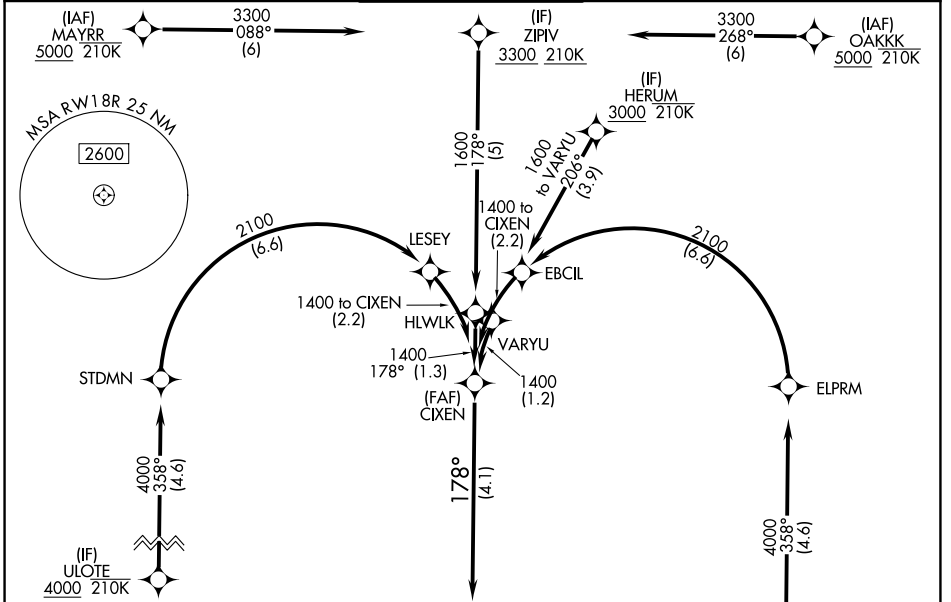
APP CRS	Rwy Ldg	9400
178°	TDZE	35
	Apt Elev	36

RNAV (RNP) Z RWY 18R

VALLEY INTL (H.R.L.)

RNP AR APCH - GPS.	MALSR	MISSED APPROACH: Climb to 500 then climbing left turn to 2000 direct RELAX and hold.
<p>▼ For uncompensated Baro-VNAV systems, procedure NA below -1°C or above 54°C. When local altimeter setting not received, procedure NA. For inop ALS, increase RNP 0.11 all Cats visibility to RVR 4000 and RNP 0.30 all Cats visibility to RVR 4500.</p>		

ATIS 124.85	VALLEY APP CON 120.7 279.5	HARLINGEN TOWER* 119.3 (CTAF) 0 317.6	GND CON 121.7	UNICOM 122.95
-----------------------	--------------------------------------	---	-------------------------	-------------------------



500	2000	RELAX	VGSI and RNAV glidepath not coincident (VGSI Angle 3.00/TCH 71)	CIXEN 1400
				GP 3.00° TCH 55

CATEGORY	A	B	C	D
RNP 0.11 DA		285/24	250 (300-1/2)	
RNP 0.30 DA		345/24	310 (400-1/2)	

AUTHORIZATION REQUIRED

SC-3, 11 JUN 2026 to 09 JUL 2026

SC-3, 11 JUN 2026 to 09 JUL 2026