

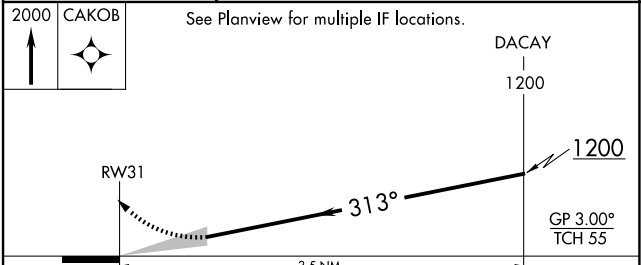
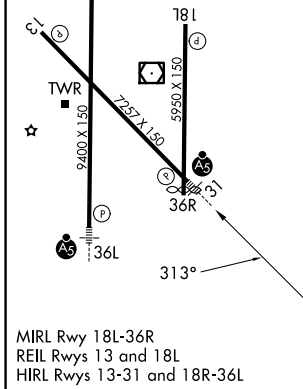
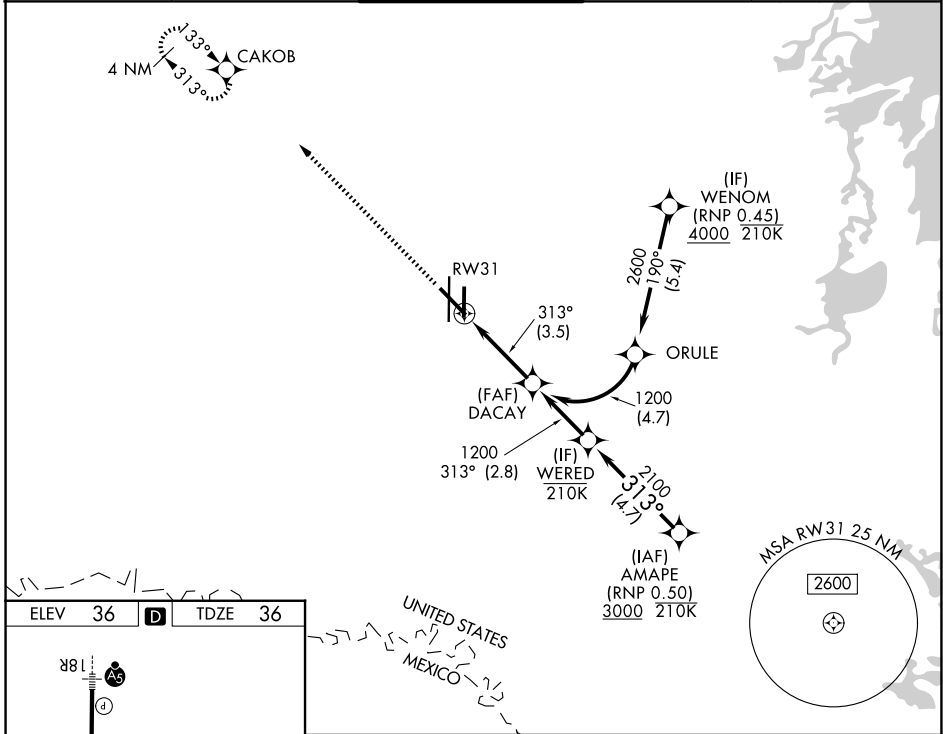
APP CRS	Rwy Ldg	7257
313°	TDZE	36
	Apt Elev	36

RNAV (RNP) Z RWY 31

VALLEY INTL (HRL)

RNP AR APCH - GPS.		MALSR	MISSED APPROACH: Climb to 2000 direct CAKOB and hold.
<p>▼ For uncompensated Baro-VNAV systems, procedure NA below -1°C or above 54°C. For inop ALS, increase RNP 0.11 all Cats visibilities to ¾ SM and increase RNP 0.30 all Cats visibilities ⅞ SM. When local altimeter setting not received, procedure NA.</p>			

ATIS 124.85	VALLEY APP CON 120.7 279.5	HARLINGEN TOWER ★ 119.3(CTAF) 317.6	GND CON 121.7	UNICOM 122.95
-----------------------	--------------------------------------	---	-------------------------	-------------------------



CATEGORY	A	B	C	D
RNP 0.11 DA		286-½	250 (300-½)	
RNP 0.30 DA		339-½	303 (400-½)	

AUTHORIZATION REQUIRED

SC-3, 11 JUN 2026 to 09 JUL 2026

SC-3, 11 JUN 2026 to 09 JUL 2026