

WAAS CH <b>78230</b> <b>W13A</b>	APP CRS <b>133°</b>	Rwy Ldg TDZE Apt Elev	<b>7257</b> <b>35</b> <b>36</b>
--	------------------------	-----------------------------	---------------------------------------

# RNAV (GPS) Y RWY 13

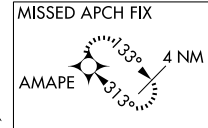
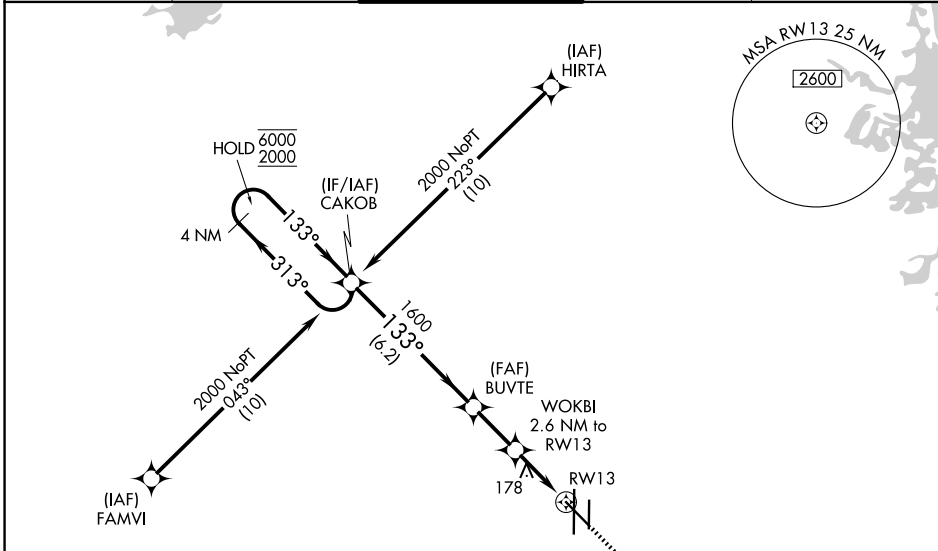
VALLEY INTL (H.R.L.)

RNP APCH - GPS.

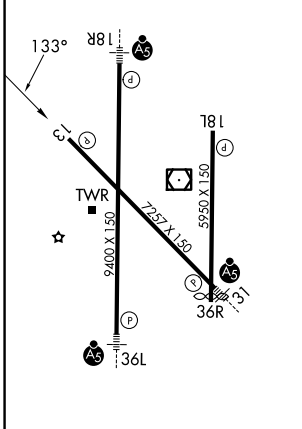
**⚠** Baro-VNAV and VDP NA when using Port Isabel altimeter setting. For uncompensated Baro-VNAV systems, LNAV/VNAV NA below -1°C or above 54°C. When local altimeter setting not received, use Port Isabel altimeter setting: increase LPV DA to 327 feet and all visibilities 1/8 SM; increase LNAV/VNAV DA to 327 feet and all visibilities 1/8 SM; increase all MDAs 60 feet and visibility Cats C and D 1/4 SM.

**MISSED APPROACH:**  
Climb to 2000 direct AMAPE and hold.

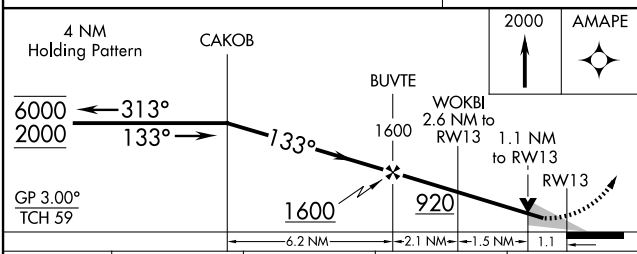
ATIS <b>124.85</b>	VALLEY APP CON <b>120.7 279.5</b>	HARLINGEN TOWER ★ <b>119.3 (CTAF) 0 317.6</b>	GND CON <b>121.7</b>	UNICOM <b>122.95</b>
-----------------------	--------------------------------------	--	-------------------------	-------------------------



ELEV	<b>36</b>	<b>D</b>	TDZE	<b>35</b>
------	-----------	----------	------	-----------



MIRL Rwy 18L-36R  
REIL Rwy 13 and 18L  
HIRL Rwy 13-31 and 18R-36L



CATEGORY	A	B	C	D
LPV DA		285-3/4	250 (300-3/4)	
LNAV/VNAV DA		285-3/4	250 (300-3/4)	
LNAV MDA	440-1	405 (500-1)	440-1 1/8	405 (500-1 1/8)
CIRCLING	460-1 424 (500-1)	560-1 524 (600-1)	600-1 1/2 564 (600-1 1/2)	680-2 644 (700-2)

SC-3, 11 JUN 2026 to 09 JUL 2026

SC-3, 11 JUN 2026 to 09 JUL 2026