


WAAS CH <b>50131</b> <b>W18A</b>	APP CRS <b>178°</b>	Rwy Ldg <b>9400</b> TDZE <b>35</b> Apt Elev <b>36</b>
----------------------------------------	------------------------	-------------------------------------------------------------

# RNAV (GPS) Y RWY 18R

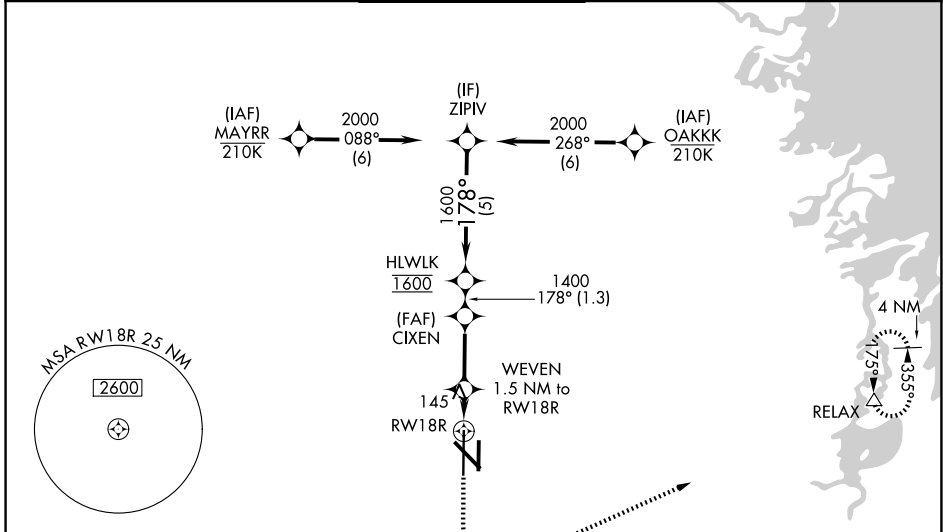
VALLEY INTL (H.R.L.)

**RNP APCH - GPS.**

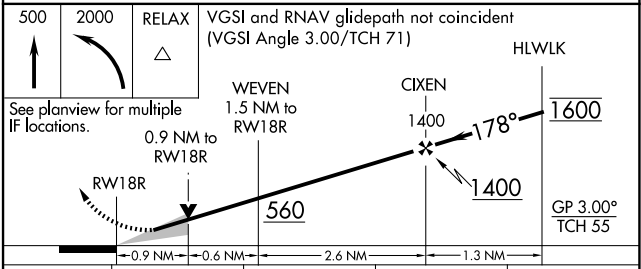
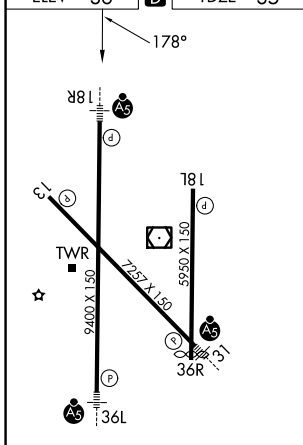
**⚠** For uncompensated Baro-VNAV systems, LNAV/VNAV NA below -1°C or above 54°C.  
**⚠** For inop ALS, increase LNAV/VNAV all Cats visibility to RVR 4000, LNAV Cats C and D visibility to RVR 5500. When local altimeter setting not received, use Port Isabel altimeter setting and increase LPV DA to 277 feet; increase LNAV/VNAV DA to 327 feet; increase all MDAs 60 feet and LNAV visibility Cat C/D to RVR 4000 and Circling visibility Cat C/D ¼ SM. For inop ALS when using Port Isabel altimeter setting, increase LNAV/VNAV all Cats visibility to RVR 4500. Baro-VNAV and VDP NA when using Port Isabel altimeter setting.  
 \* RVR 1800 authorized with use of FD or AP or HUD to DA, (NA when using Port Isabel altimeter setting).

**MALSR**  **MISSED APPROACH:** Climb to 500 then climbing left turn to 2000 direct RELAX and hold

ATIS <b>124.85</b>	VALLEY APP CON <b>120.7 279.5</b>	HARLINGEN TOWER★ <b>119.3 (CTAF) 0 317.6</b>	GND CON <b>121.7</b>	UNICOM <b>122.95</b>
-----------------------	--------------------------------------	-------------------------------------------------	-------------------------	-------------------------



ELEV <b>36</b>	<b>D</b>	TDZE <b>35</b>
----------------	----------	----------------



CATEGORY	A	B	C	D
LPV DA *		235/24	200 (200-½)	
LNAV/VNAV DA		285/24	250 (300-½)	
LNAV MDA	400/24	365 (400-½)	400/35	365 (400-¾)
CIRCLING	460-1 424 (500-1)	560-1 524 (600-1)	600-1½ 564 (600-½)	680-2 644 (700-2)

MIRL Rwy 18L-36R  
 REIL Rwy 13 and 18L  
 HIRL Rwy 13-31 and 18R-36L

SC-3, 11 JUN 2026 to 09 JUL 2026

SC-3, 11 JUN 2026 to 09 JUL 2026