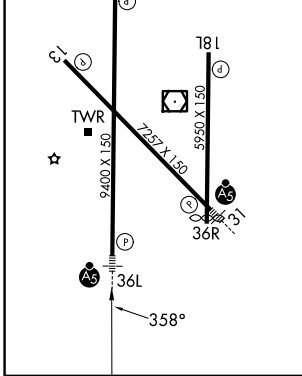
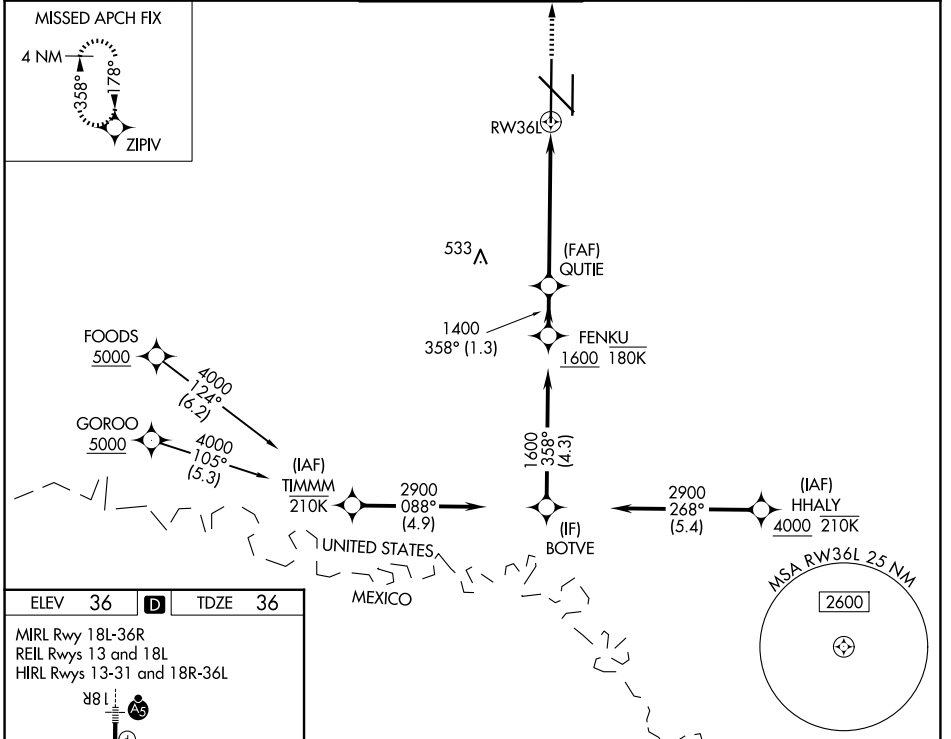


WAAS CH 86530 W36B	APP CRS 358°	Rwy Ldg TDZE 36 Apt Elev 36	9400
--	------------------------	---	-------------

RNAV (GPS) Y RWY 36L

VALLEY INTL (H.R.L.)

RNP APCH - GPS.		<p>⚠ For uncompensated Baro-VNAV systems, LNAV/VNAV NA below -1°C or above 54°C. Baro-VNAV and VDP NA when using Port Isabel altimeter setting. When local altimeter setting not received, use Port Isabel altimeter setting and increase LPV DA to 278 feet; increase LNAV/VNAV DA to 447 feet and all visibilities ½ SM. Increase all MDAs 60 feet, and LNAV visibility Cat C and D ¼ SM; and Circling visibility Cats C and D ¼ SM.</p>		<p>MALS R</p>	<p>MISSED APPROACH: Climb to 2000 direct ZIPV and hold.</p>
ATIS 124.85	VALLEY APP CON 120.7 279.5	HARLINGEN TOWER ★ 119.3(CTAF) 317.6	GND CON 121.7	UNICOM 122.95	



ELEV 36	TDZE 36	<p>2000 ZIPV</p> <p>↑</p>		<p>VGSI and RNAV glidepath not coincident (VGSI Angle 3.00/TCH 74).</p>	<p>FENKU</p>
<p>MIRL Rwy 18L-36R REIL Rwys 13 and 18L HIRL Rwys 13-31 and 18R-36L</p>		<p>1.3 NM to RWY 36L</p>		<p>1400</p>	<p>1600</p>
<p>GP 3.00° TCH 55</p>		<p>1.3 NM</p>		<p>2.8 NM</p>	<p>1.3 NM</p>
CATEGORY	A	B	C	D	
LPV DA	236-¾		200 (200-¾)		
LNAV/VNAV DA	405-1		369 (400-1)		
LNAV MDA	500-1	464 (500-1)	500-1¾	464 (500-1¾)	
CIRCLING	500-1 464 (500-1)	560-1 524 (600-1)	600-1½ 564 (600-1½)	680-2 644 (700-2)	

SC-3, 11 JUN 2026 to 09 JUL 2026

SC-3, 11 JUN 2026 to 09 JUL 2026