

APP CRS	Rwy Ldg	4380
057°	TDZE	644
	Apt Elev	644

RNAV (GPS) RWY 7

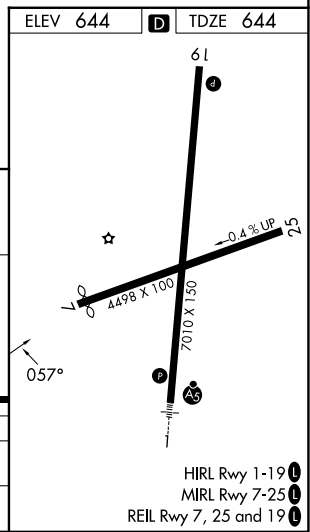
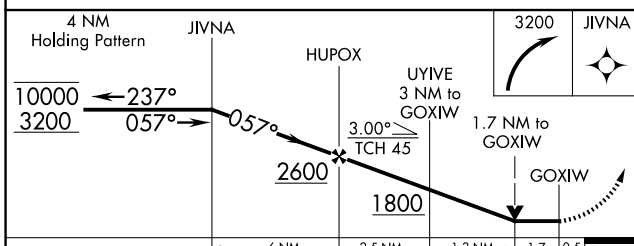
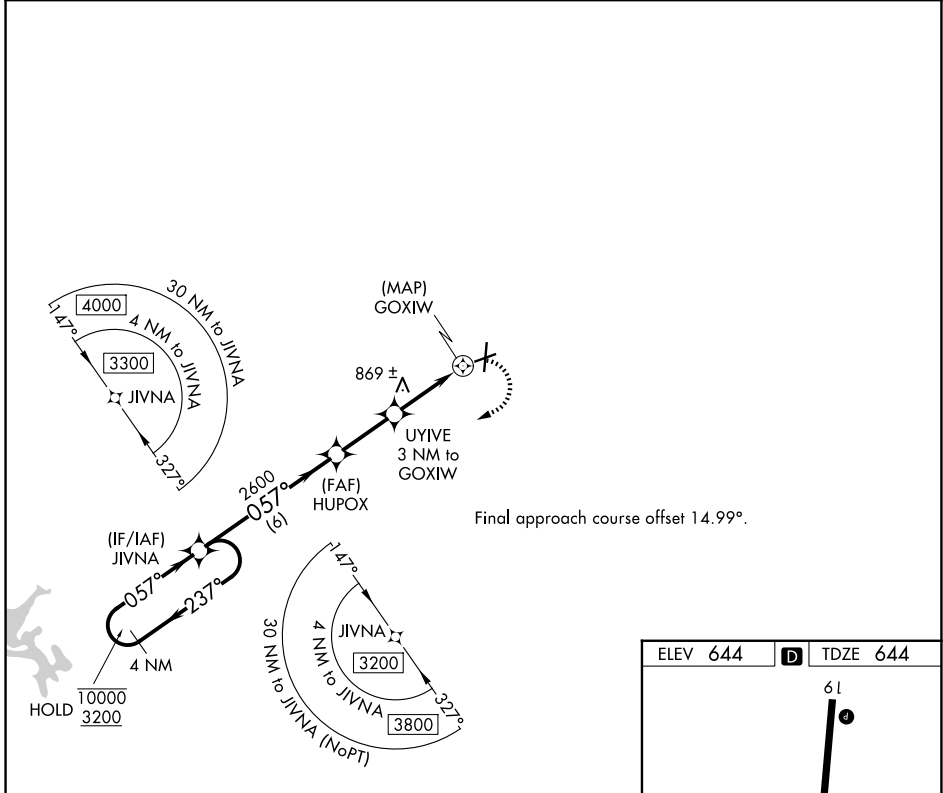
RICHARD B RUSSELL RGNL - J H TOWERS FLD (RMG)

RNP APCH - GPS.

▼ Rwy 7 helicopter visibility reduction below 3/4 SM NA.
 ▲ Straight-in minimums NA at night.
 Circling NA northwest of Rwy 7 and 19.

MISSED APPROACH: Climbing right turn to 3200 direct JIVNA and hold.

ASOS 119.925	ATLANTA CENTER 124.5 270.325	GCO 121.725	UNICOM 122.725 (CTAF) 0
------------------------	--	-----------------------	-----------------------------------



CATEGORY	A	B	C	D
LNVA MDA	1380-1 736 (800-1)		1380-2 736 (800-2)	
CIRCLING	1380-1 736 (800-1)		1480-2 1/2 836 (900-2 1/2)	1840-3 1196 (1200-3)

HIRL Rwy 1-19
 MIRL Rwy 7-25
 REIL Rwy 7, 25 and 19

SE-4, 11 JUN 2026 to 09 JUL 2026

SE-4, 11 JUN 2026 to 09 JUL 2026