

LOC I-UIIN 110.1	APP CRS 218°	Rwy Ldg TDZE Apt Elev	7098 753 768
----------------------------	------------------------	-----------------------------	---

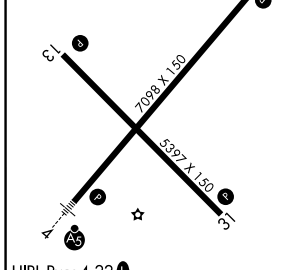
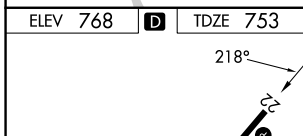
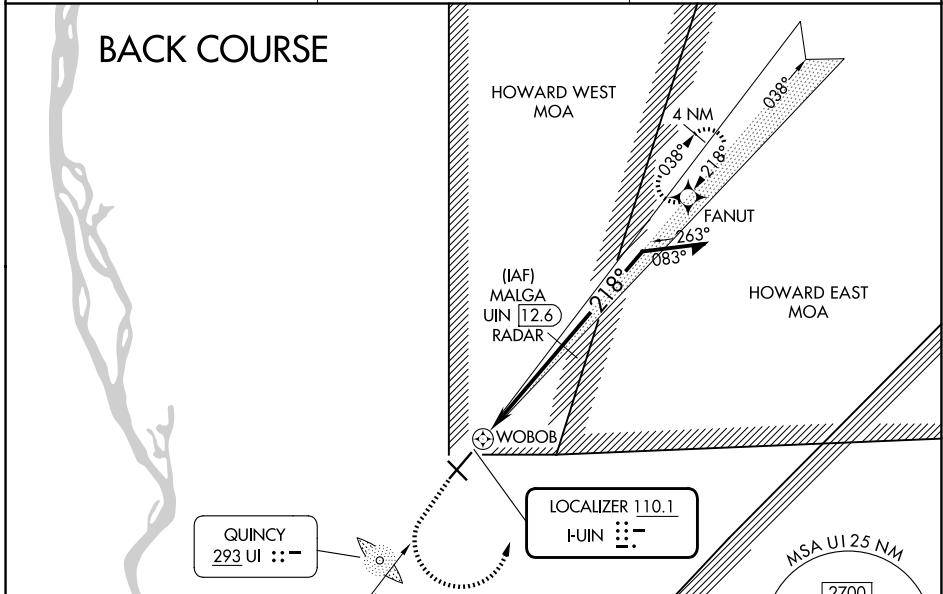
LOC BC RWY 22
QUINCY RGNL-BALDWIN FLD (UIIN)

RADAR required for procedure entry at MALGA. RNP APCH - GPS.

▽ VDP NA when using Pittsfield altimeter setting. When local altimeter setting not received, use Pittsfield altimeter setting and increase all MDAs 80 feet and S-22 visibility Cat C/D 1/8 SM. DME from UIIN TACAN. DME use requires simultaneous reception of I-UIIN and UIIN DME.

▲ NA MISSED APPROACH: Climb to 1200 then climbing left turn to 2400 direct FANUT and hold.

ASOS 121.425	KANSAS CITY CENTER 126.225 317.775	UNICOM 123.0 (CTAF) 0
------------------------	--	---------------------------------



↑	1200	2400	FANUT	MALGA UIIN [12.6] RADAR	Remain within 10 NM
				WOBBOB	Disregard GS indications.
				UIIN [8.8]	
				0.7	0.6
				3.8 NM	

	Category A	Category B	Category C	Category D
S-22	1180-1	427 (500-1)	1180-1¼	427 (500-1¼)
CIRCLING	1180-1	1220-1	1240-1½	1320-2
	412 (500-1)	452 (500-1)	472 (500-1½)	552 (600-2)

EC-3, 11 JUN 2026 to 09 JUL 2026

EC-3, 11 JUN 2026 to 09 JUL 2026