

WAAS CH 45705 W22A	APP CRS 218°	Rwy Ldg TDZE 753 Apt Elev 768
--	------------------------	---

RNAV (GPS) RWY 22

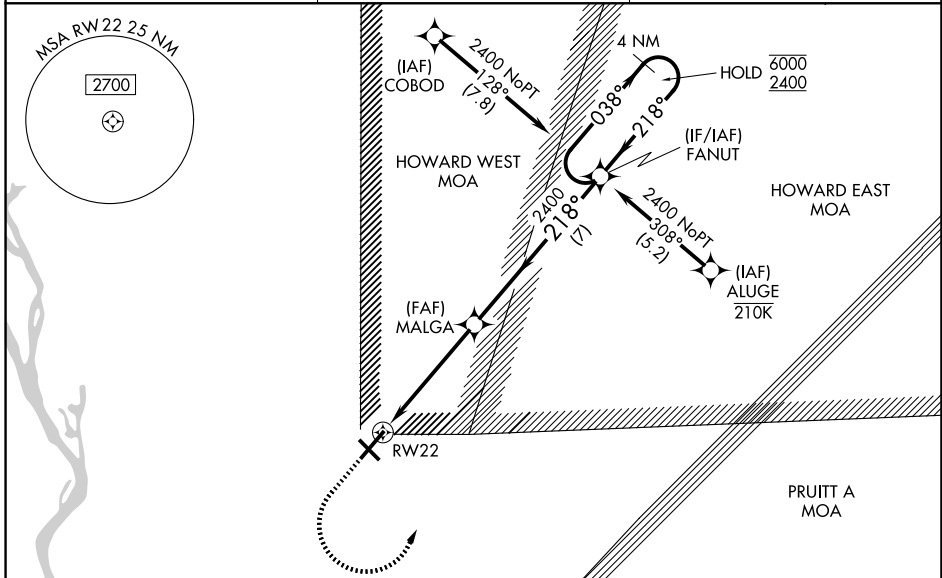
QUINCY RGNL-BALDWIN FLD (UIN)

RNP APCH - GPS.

For uncompensated Baro-VNAV systems, LNAV/VNAV NA below -21°C or above 54°C. Baro-VNAV and VDP NA when using Pittsfield altimeter setting. When local altimeter setting not received, use Pittsfield altimeter setting and increase LPV DA to 1073 feet and all visibilities 1/8 SM. Increase LNAV/VNAV DA to 1120 feet and all visibilities 1/8 SM. Increase all MDAs 80 feet and LNAV visibility Cat C/D 1/8 SM.

MISSED APPROACH: Climb to 1300 then climbing left turn to 2400 direct FANUT and hold.

ASOS 121.425	KANSAS CITY CENTER 126.225 317.775	UNICOM 123.0 (CTAF)
------------------------	--	-------------------------------

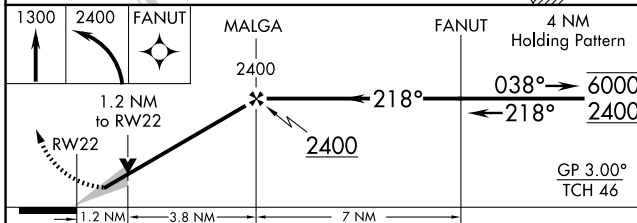


EC-3, 11 JUN 2026 to 09 JUL 2026

EC-3, 11 JUN 2026 to 09 JUL 2026

ELEV 768	D	TDZE 753
----------	---	----------

This diagram provides a detailed view of the approach path. It shows a 1.2 NM segment to RWY 22, followed by a 3.8 NM segment to MALGA (2400 feet), and a 7 NM segment to FANUT. A 4 NM holding pattern is shown at 6000 feet, descending to 2400 feet. The approach path is defined by headings of 218° and 038°. Obstacle clearance is provided as GP 3.00° TCH 46. A detailed view of the runway intersection shows RWY 22 crossing RWY 4-22, RWY 13-31, and RWY 22. Obstacle heights are indicated as 5397 X 150 and 7098 X 150.



CATEGORY	A	B	C	D
LPV DA		1003-3/4	250 (300-3/4)	
LNAV/VNAV DA		1050-7/8	297 (300-7/8)	
LNAV MDA	1180-1	427 (500-1)	1180-1/4	427 (500-1/4)
CIRCLING	1180-1 412 (500-1)	1220-1 452 (500-1)	1240-1/2 472 (500-1/2)	1320-2 552 (600-2)