

WAAS CH <b>61210</b> <b>W31A</b>	APP CRS <b>313°</b>	Rwy Ldg TDZE <b>769</b> Apt Elev <b>769</b>	<b>5146</b>
--	------------------------	---	-------------

# RNAV (GPS) RWY 31

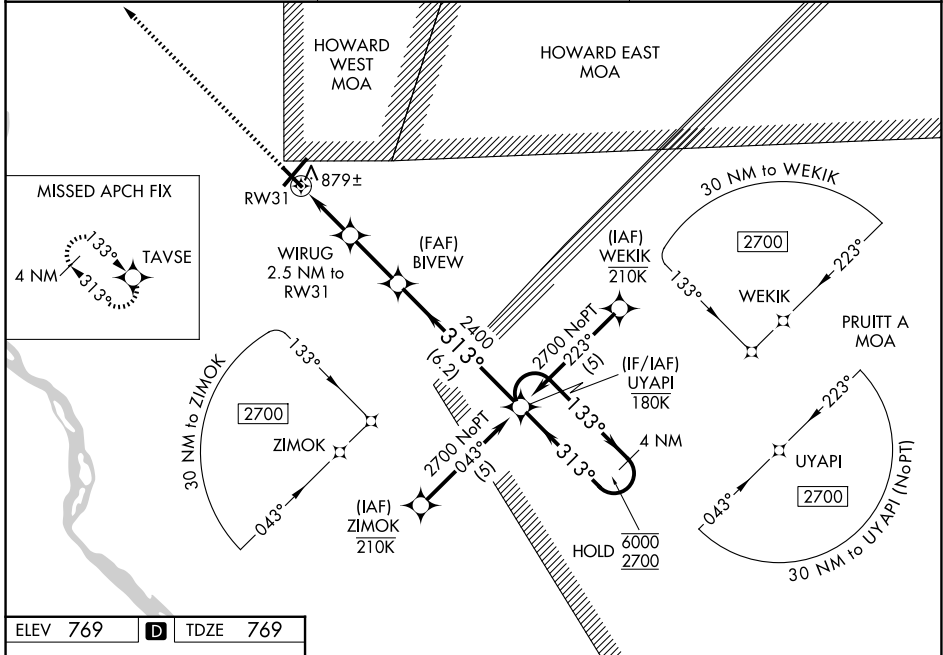
QUINCY RGNL-BALDWIN FLD (UIN)

RNP APCH.

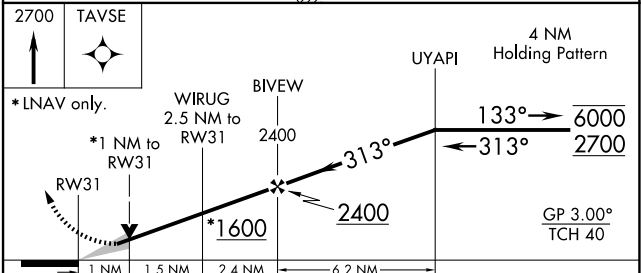
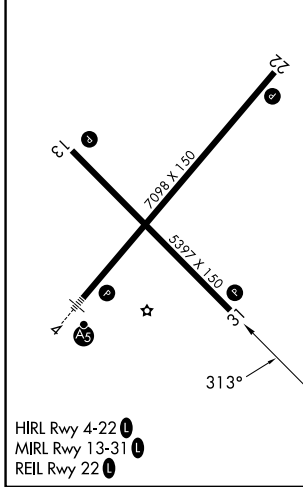
**▽**  
**▲** For uncompensated Baro-VNAV systems, LNAV/VNAV NA below -16° C or above 54° C.

MISSED APPROACH:  
Climb to 2700 direct  
TAVSE and hold.

ASOS <b>121.425</b>	KANSAS CITY CENTER <b>126.225 317.775</b>	UNICOM <b>123.0 (CTAF) 0</b>
------------------------	--	---------------------------------



ELEV <b>769</b>	<b>D</b>	TDZE <b>769</b>
-----------------	----------	-----------------



CATEGORY	A	B	C	D
LPV DA		1057-1	288 (300-1)	
LNAV/VNAV DA		1168-1½	399 (400-1½)	
LNAV MDA		1140-1	371 (400-1)	1140-1½ 371 (400-1½)
CIRCLING	1180-1 411 (500-1)	1220-1 451 (500-1)	1240-1½ 471 (500-1½)	1320-2 551 (600-2)

EC-3, 11 JUN 2026 to 09 JUL 2026

EC-3, 11 JUN 2026 to 09 JUL 2026