

WAAS CH <b>53510</b> <b>W04A</b>	APP CRS <b>038°</b>	Rwy Ldg TDZE <b>763</b> Apt Elev <b>768</b>	<b>7098</b>
--	------------------------	---	-------------


# RNAV (GPS) RWY 4

QUINCY RGNL-BALDWIN FLD (UIN)

RNP APCH - GPS.

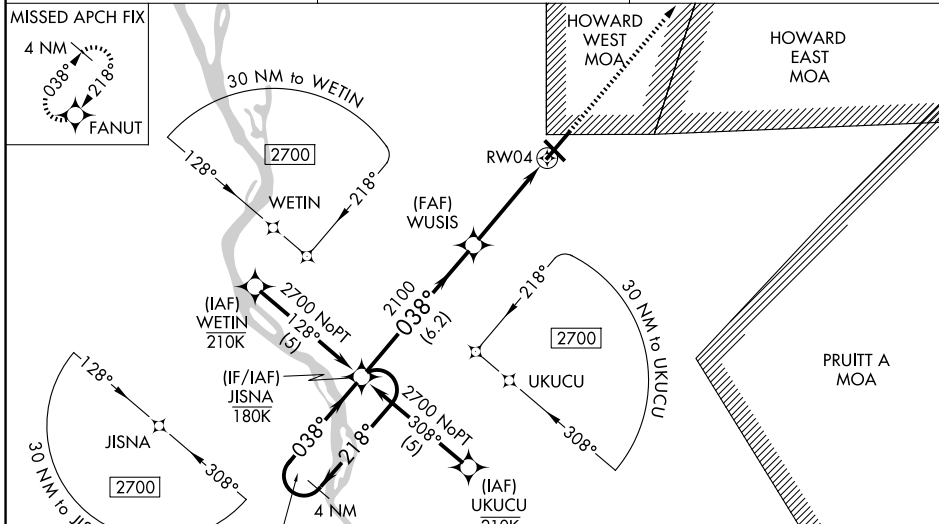
**▼** For uncompensated Baro-VNAV systems, LNAV/VNAV NA below -21°C or above 54°C. Baro-VNAV and VDP NA when using PPO altimeter setting. When local altimeter setting not received, use Pittsfield altimeter setting and increase LPV DA to 1033 feet; increase LNAV/VNAV DA to 1104 feet and all visibilities 1/8 SM. Increase all MDAs 80 feet and LNAV visibility Cat C/D 3/8 SM. For inop ALS when local altimeter setting not received, increase LPV all Cats visibility to 7/8 SM; increase LNAV/VNAV all Cats visibility to 1 SM; increase LNAV Cat C and D visibility to 1/8 SM. For inop ALS increase LNAV/VNAV all Cats visibility to 7/8 SM.

MALSRL

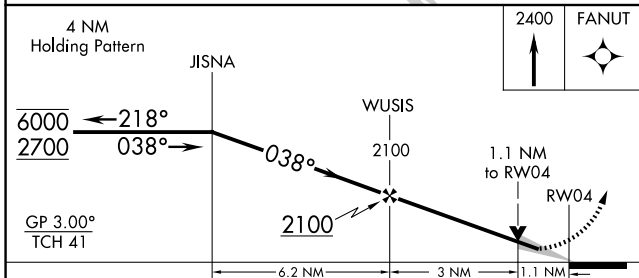


MISSED APPROACH:  
Climb to 2400 direct FANUT and hold.

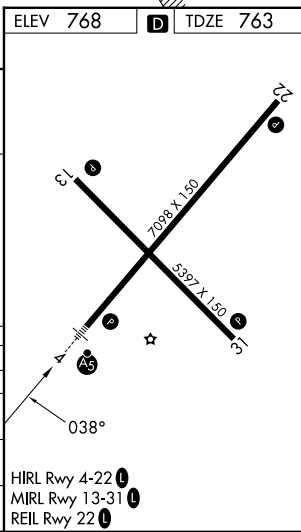
ASOS <b>121.425</b>	KANSAS CITY CENTER <b>126.225 317.775</b>	UNICOM <b>123.0 (CTAF) 0</b>
------------------------	--	---------------------------------



ELEV 768	<b>D</b>	TDZE 763
----------	----------	----------



CATEGORY	A	B	C	D
LPV DA		963-1/2	200 (200-1/2)	
LNAV/VNAV DA		1034-1/2	271 (300-1/2)	
LNAV MDA	1160-1/2	397 (400-1/2)	1160-5/8	397 (400-5/8)
CIRCLING	1180-1 412 (500-1)	1220-1 452 (500-1)	1240-1 1/2 472 (500-1 1/2)	1320-2 552 (600-2)



EC-3, 11 JUN 2026 to 09 JUL 2026

EC-3, 11 JUN 2026 to 09 JUL 2026