

|  |                        |                             |   |
|--|------------------------|-----------------------------|---|
| WAAS<br>CH <b>63136</b><br><b>W30A</b> | APP CRS<br><b>307°</b> | Rwy Ldg<br>TDZE<br>Apt Elev | <b>7500</b><br><b>4444</b><br><b>4457</b> |
|--|------------------------|-----------------------------|---|

# RNAV (GPS) RWY 30

LAS CRUCES INTL (LRU)

**⚠** For uncompensated Baro-VNAV systems, LNAV/VNAV NA below -12°C (11°F) or above 51°C (124°F). DME/DME RNP-0.3 NA. Baro-VNAV and VDP NA when using Deming altimeter setting. When local altimeter setting not received, use Deming altimeter setting; increase LPV DA to 4758 feet, LNAV/VNAV DA to 4863 feet and all visibilities 3/8 mile; increase all MDA 120 feet and visibility Cat C and D 1/2 mile.

MALSR

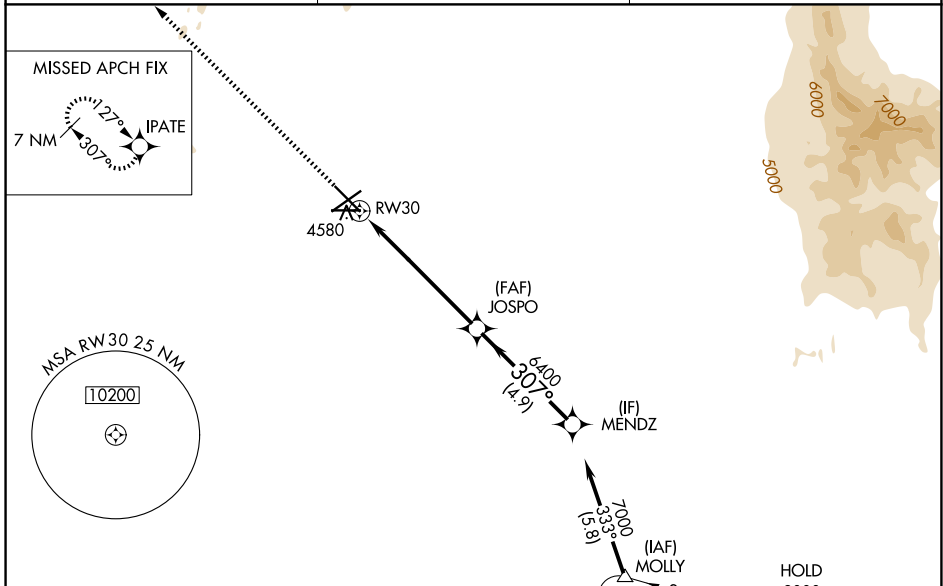


**MISSED APPROACH:** Climb to 9000 direct IPATE and hold, continue climb-in-hold to 9000.

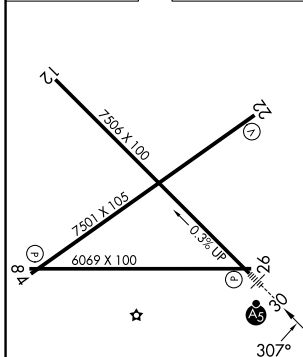
AWOS-3PT  
**119.025**

ALBUQUERQUE CENTER  
**128.2 285.5**

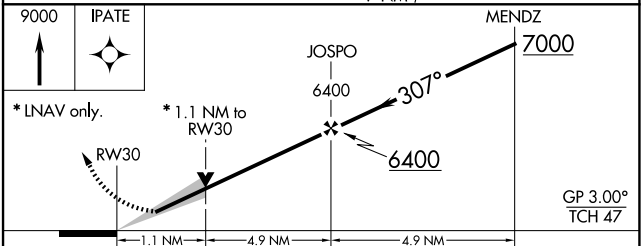
UNICOM  
**122.7 (CTAF)**



|                  |          |                  |
|------------------|----------|------------------|
| ELEV <b>4457</b> | <b>D</b> | TDZE <b>4444</b> |
|------------------|----------|------------------|



REIL Rwy 12  
HIRL Rwy 12-30  
MIRL Rwy 4-22 and 8-26



| CATEGORY     | A                     | B                     | C                             | D                             |
|--------------|-----------------------|-----------------------|-------------------------------|-------------------------------|
| LPV DA       |                       | 4644-1/2              | 200 (200-1/2)                 |                               |
| LNAV/VNAV DA |                       | 4749-5/8              | 305 (300-5/8)                 |                               |
| LNAV MDA     | 4840-1/2              | 396 (400-1/2)         | 4840-5/8                      | 396 (400-5/8)                 |
| CIRCLING     | 4900-1<br>443 (500-1) | 5040-1<br>583 (600-1) | 5320-2 1/2<br>863 (900-2 1/2) | 5320-2 3/4<br>863 (900-2 3/4) |

SW-1, 11 JUN 2026 to 09 JUL 2026

SW-1, 11 JUN 2026 to 09 JUL 2026