

APP CRS	Rwy Ldg	4000
329°	TDZE	692
	Apt Elev	692

RNAV (GPS) RWY 33

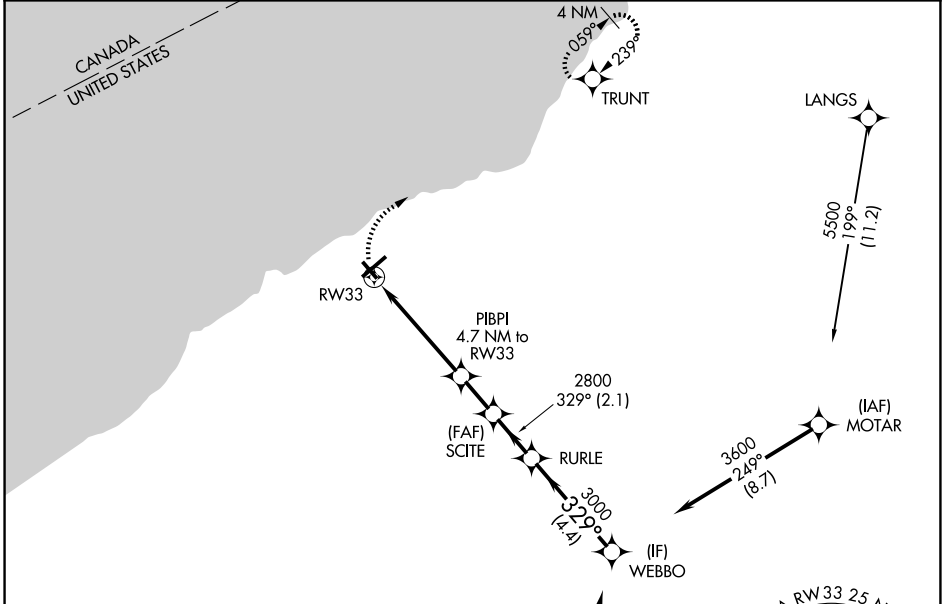
CHAUTAUGUA COUNTY/DUNKIRK (DKK)

RNP APCH.

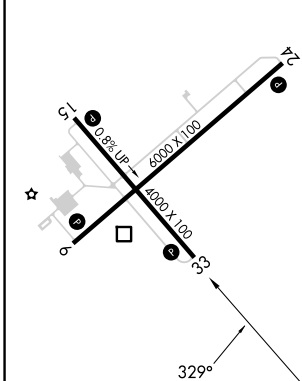
⚠ Circling Cat D NA southeast of Rwy 6 and southwest of Rwy 33.
 Rwy 33 helicopter visibility reduction below 1 SM NA.
❄ -21°C Straight-In Rwy 33 NA at night, Circling Rwy 6, 24, 33 NA at night.

MISSED APPROACH: Climbing right turn to 3200 direct TRUNT and hold.

ASOS 119.275	BUFFALO APP CON 126.5 317.6	UNICOM 123.075 (CTAF) 0
------------------------	---------------------------------------	-----------------------------------



ELEV 692	TDZE 692
----------	----------



Procedure NA for arrival on JHW VOR/DME airway radials 346 CW 103.

(IAF) JAMESTOWN JHW
 3600 023° (8.4)

(IF) WEBBO
 3000 329° (4.4)

(FAF) SCITE
 2800 329° (2.1)

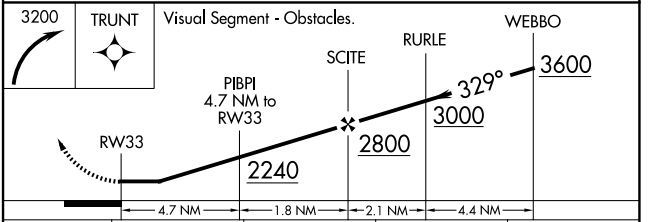
PIBPI 4.7 NM to RWY 33

TRUNT
 3200 059° (0.5) / 239°

(IAF) MOTAR
 3600 249° (8.7)

LANGS
 5500 199° (11.2)

MSA RWY 33 25 NM
 3900



CATEGORY	A	B	C	D
LNAV MDA	1860-1¼ 1168 (1200-1¼)	1860-1½ 1168 (1200-1½)	1860-3	1168 (1200-3)
CIRCLING	1860-1¼ 1168 (1200-1¼)	1860-1½ 1168 (1200-1½)	1860-3 1168 (1200-3)	2140-3 1448 (1500-3)

MIRL Rwy 15-33 **0**
 REIL Rws 6 and 24 **0**
 HIRL Rwy 6-24 **0**

NE-2, 11 JUN 2026 to 09 JUL 2026

NE-2, 11 JUN 2026 to 09 JUL 2026