

APP CRS 239°	Rwy Ldg TDZE Apt Elev	N/A N/A 692
------------------------	-----------------------------	--

RNAV (GPS)-A

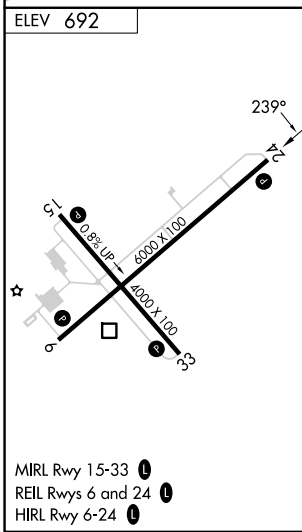
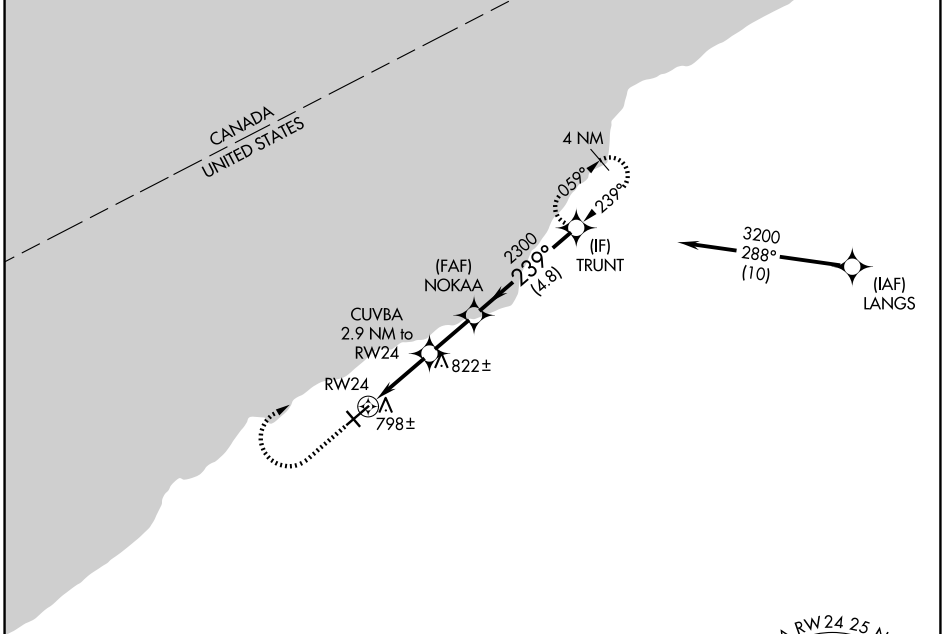
CHAUTAUGUA COUNTY/DUNKIRK (DKK)

RNP APCH - GPS.

⚠ Circling Cat D NA southeast of Rwy 6 and southwest of Rwy 33.
⚠ Circling Rwy 6, 24, 33 NA at night.
⚠ -21°C Rwy 6, 24, 33 helicopter visibility reduction below 1 SM NA.

MISSED APPROACH: Climb to 1900 then climbing right turn to 3200 direct TRUNT and hold.

ASOS 119.275	BUFFALO APP CON 126.5 317.6	UNICOM 123.075 (CTAF) ①
------------------------	---------------------------------------	-----------------------------------



	1900	3200	TRUNT	Visual Segment - Obstacles.
	↑	↷	✧	
	RW24	CUVBA 2.9 NM to RW24	NOKAA	TRUNT
	↷	↗	↗	↗
	1440	2300	2300	3200
	← 2.9 NM →	← 2.1 NM →	← 4.8 NM →	
CATEGORY	A	B	C	D
CIRCLING	1200-1 508 (600-1)	1320-1 628 (700-1)	1640-2¾ 948 (1000-2¾)	2140-3 1448 (1500-3)

NE-2, 11 JUN 2026 to 09 JUL 2026

NE-2, 11 JUN 2026 to 09 JUL 2026