

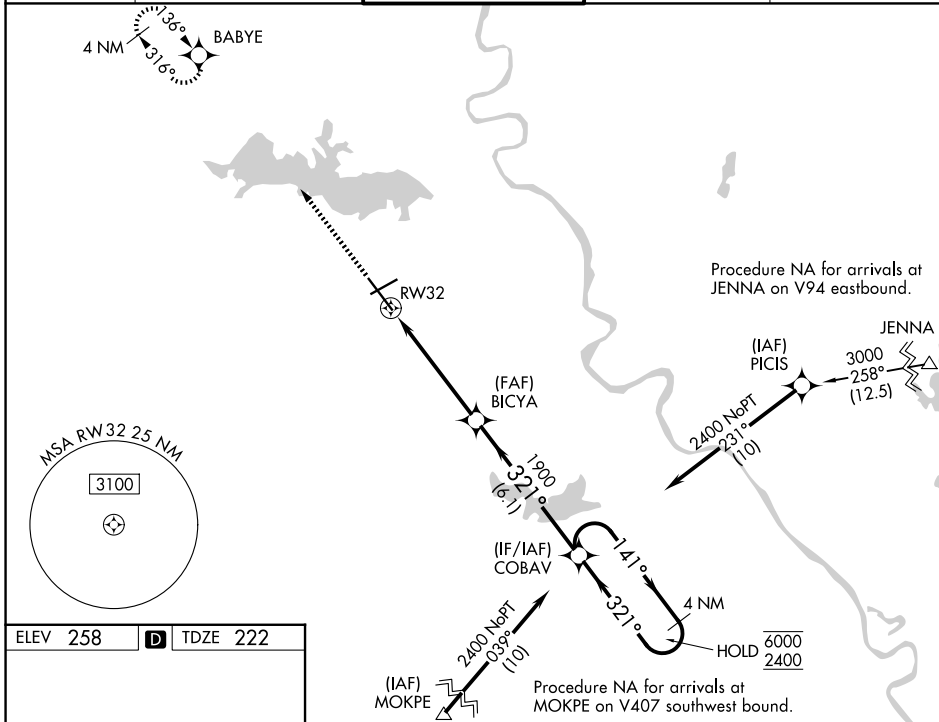
WAAS CH <b>77913</b> <b>W32A</b>	APP CRS <b>321°</b>	Rwy Ldg TDZE Apt Elev	<b>7975</b> <b>222</b> <b>258</b>
--	------------------------	-----------------------------	---

# RNAV (GPS) RWY 32

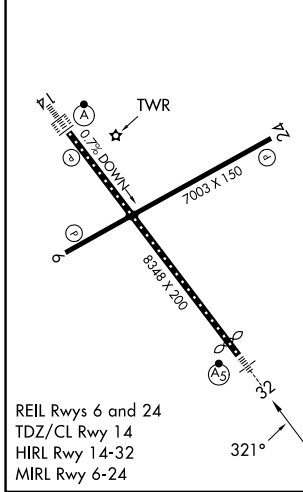
SHREVEPORT RGNL (SHV)

RNP APCH.	<p><b>▼</b> Rwy 32 helicopter visibility reduction below RVR 4000 NA. Inop table does not apply to LPV all Cats. For uncompensated Baro-VNAV systems, LNAV/VNAV NA below -6°C or above 54°C. For inop ALS, increase LNAV/VNAV all Cats visibility to RVR 6000 and LNAV Cat A and B visibility to RVR 5500.</p> <p><b>▲</b> ASR</p>	MALS R	MISSED APPROACH: Climb to 2600 direct BABYE and hold.
-----------	--	--------	--

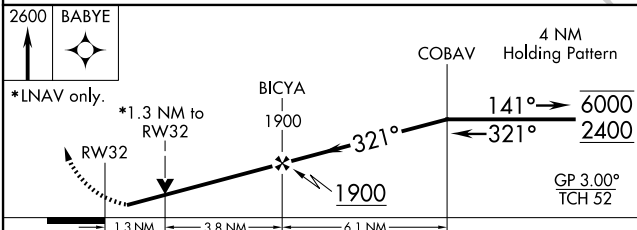
ATIS <b>128.45</b>	SHREVEPORT APP CON <b>119.9 335.55</b>	SHREVEPORT TOWER <b>121.4 236.775</b>	GND CON <b>121.175 236.775</b>	CLNC DEL <b>124.65</b>
-----------------------	---	--	-----------------------------------	---------------------------



ELEV 258	<b>D</b>	TDZE 222
----------	----------	----------



REIL Rwsy 6 and 24  
TDZ/CL Rwy 14  
HIRL Rwy 14-32  
MIRL Rwy 6-24



CATEGORY	A	B	C	D
LPV DA		422/40	200 (200-¾)	
LNAV/VNAV DA		629/40	407 (400-¾)	
LNAV MDA	680/40	458 (500-¾)	680/45	458 (500-¾)
CIRCLING	760-1	502 (600-1)	980-2 722 (800-2)	1100-2¾ 842 (900-2¾)

SC-4, 11 JUN 2026 to 09 JUL 2026

SC-4, 11 JUN 2026 to 09 JUL 2026