

VORTAC TWF <b>113.1</b> Chan <b>78</b>	APP CRS <b>248°</b>	Rwy Ldg TDZE <b>4154</b> Apt Elev <b>4154</b>	<b>8704</b>
--	------------------------	---	-------------

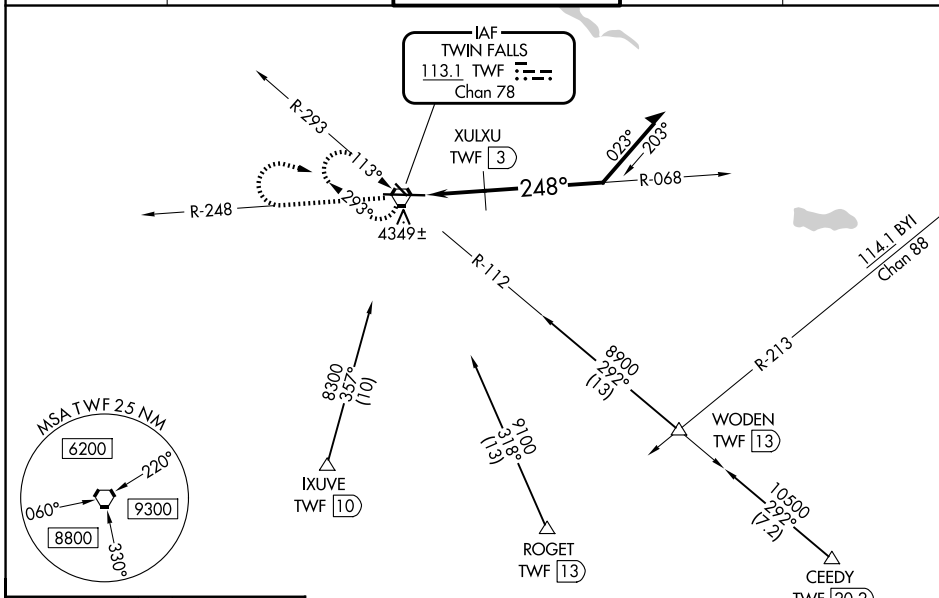
**VOR RWY 26**  
JOSLIN FLD/MAGIC VALLEY RGNL (TWF)

**⚠** Night landing: Rwy 30 NA. VDP NA with Jerome altimeter setting. When local altimeter setting not received, use Jerome altimeter setting and increase all MDA 60 feet; increase S-26 Cat A visibility ¼ mile, Cat C/D ½ mile, Circling Cat C ¼ mile, and XULXU FIX S-26 Cat C/D ½ mile. For inop MALSR, increase S-26 Cat C/D visibility to 2½ miles; when using Jerome altimeter setting increase XULXU FIX S-26 Cat C/D visibility to 1¾ mile.



**MISSED APPROACH:** Climb to 6000 on TWF VORTAC R-248 then right turn direct TWF VORTAC and hold.

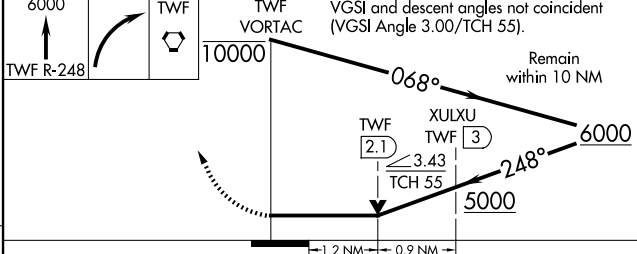
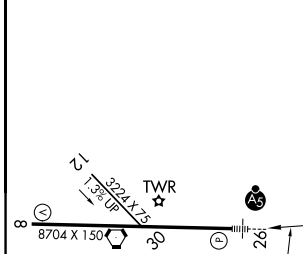
ASOS <b>135.025</b>	TWIN FALLS APP CON* <b>126.7 353.75</b>	TWIN FALLS TOWER* <b>118.2 (CTAF) 0317.5</b>	GND CON <b>121.7</b>	UNICOM <b>122.95</b>
------------------------	--	---	-------------------------	-------------------------



NW-1, 11 JUN 2026 to 09 JUL 2026

NW-1, 11 JUN 2026 to 09 JUL 2026

ELEV <b>4154</b>	TDZE <b>4154</b>
------------------	------------------



CATEGORY	A	B	C	D
S-26	5000-½ 846 (900-½)	5000-¾ 846 (900-¾)	5000-1⅞	846 (900-1⅞)
CIRCLING	5000-1¼	846 (900-1¼)	5100-2¾ 946 (1000-2¾)	5100-3 946 (1000-3)
<b>XULXU FIX MINIMUMS</b>				
S-26	4600-½	446 (500-½)	4600-7/8	446 (500-7/8)
CIRCLING	4700-1 546 (600-1)	4780-1 626 (700-1)	5100-2¾ 946 (1000-2¾)	5100-3 946 (1000-3)

REIL Rwy 8 **①**  
HIRL Rwy 8-26 **①**