

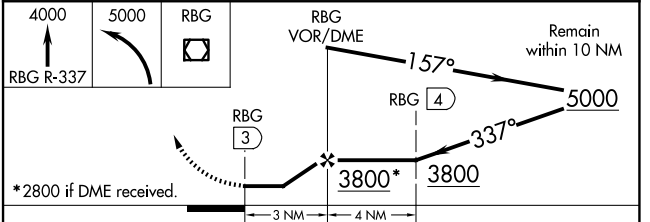
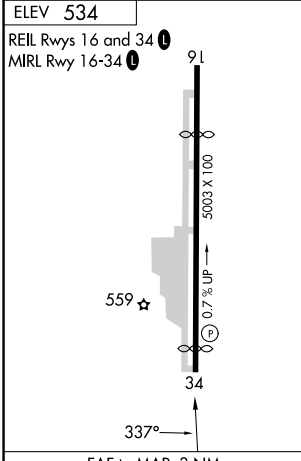
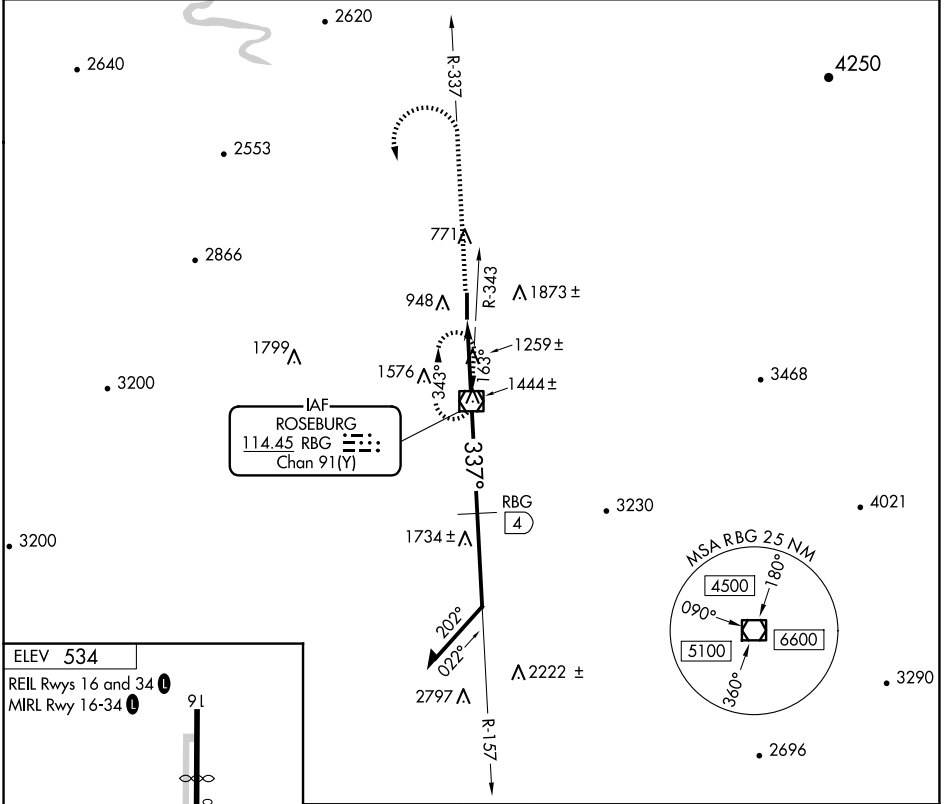
VOR/DME RBG 114.45 Chan 91(Y)	APP CRS 337°	Rwy Ldg TDZE Apt Elev 534	N/A N/A 534
---	------------------------	--	--

VOR-A
ROSEBURG RGNL (R.BG)

▼ Circling not authorized east of Rwy 16-34.
▲ NA Procedure NA at night.
Rwy 34 helicopter visibility reduction below 1 SM NA.

MISSED APPROACH: Climb to 4000 on RBG VOR/DME R-337 within 1.5 NM; then climbing left turn to 5000 direct RBG VOR/DME and hold.

ASOS 135.475	SEATTLE CENTER 127.55 239.0	UNICOM 122.8 (CTAF)
------------------------	---------------------------------------	-------------------------------



CATEGORY	A		B		C		D	
	CIRCLING	2600-1¼	2066 (2100-1¼)	2600-1½	2066 (2100-1½)	2600-3	2066	2100-3
CIRCLING	DME MINIMUMS							
	1740-1¼	1206 (1300-1¼)	1740-1½	1206 (1300-1½)	2020-3	1486 (1500-3)	2100-3	1566 (1600-3)

ROSEBURG, OREGON
Amdt 6B 25MAR21

43°14'N-123°21'W

ROSEBURG RGNL (R.BG)
VOR-A

NW-1, 11 JUN 2026 to 09 JUL 2026

NW-1, 11 JUN 2026 to 09 JUL 2026