

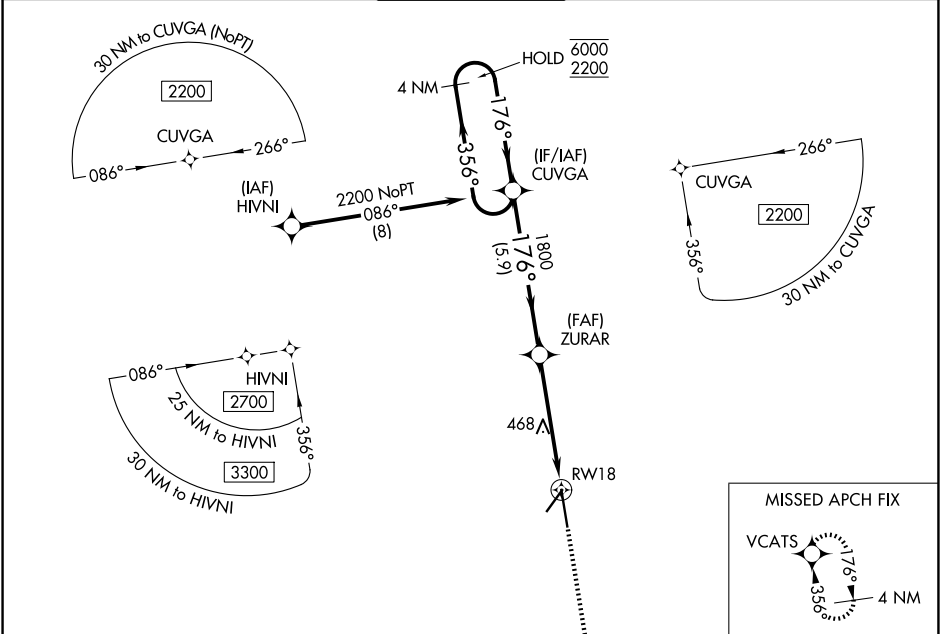
WAAS CH 87101 W18A	APP CRS 176°	Rwy Ldg TDZE 199 Apt Elev 203	8002
--	------------------------	---	-------------

RNAV (GPS) RWY 18

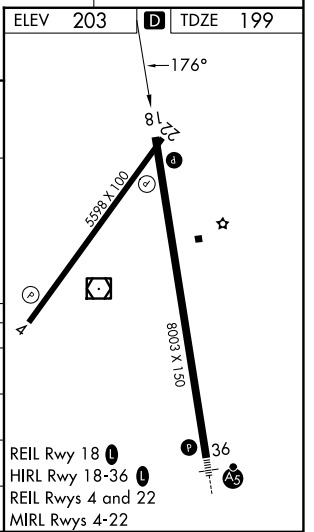
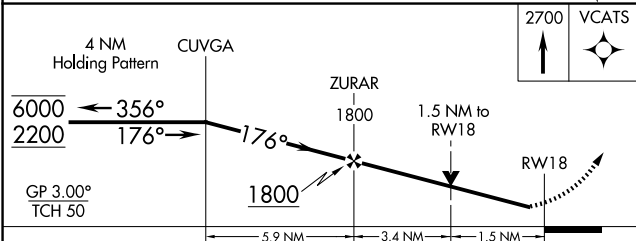
VALDOSTA RGNL (VLD)

RNP APCH - GPS.		<p>▼ Rwy 18 helicopter visibility reduction below ¼ SM NA. For uncompensated Baro-VNAV systems, LNAV/VNAV NA below -4°C or above 54°C.</p> <p>▲ MISSED APPROACH: Climb to 2700 direct VCATS and hold.</p>	
-----------------	--	---	--

ASOS 126.225	VALDOSTA APP CON * 126.6 285.6	VALDOSTA TOWER * 128.35 (CTAF) 0	GND CON 121.7	UNICOM 122.95
------------------------	--	--	-------------------------	-------------------------



ELEV 203	D TDZE 199
----------	-------------------



CATEGORY	A	B	C	D
LPV DA		454-¾ 255 (300-¾)		
LNAV/VNAV DA		458-¾ 259 (300-¾)		
LNAV MDA	720-1 521 (600-1)		720-1½ 521 (600-1½)	
CIRCLING	720-1 517 (600-1)		900-2 697 (700-2)	1020-2¾ 817 (900-2¾)

SE-4, 11 JUN 2026 to 09 JUL 2026

SE-4, 11 JUN 2026 to 09 JUL 2026