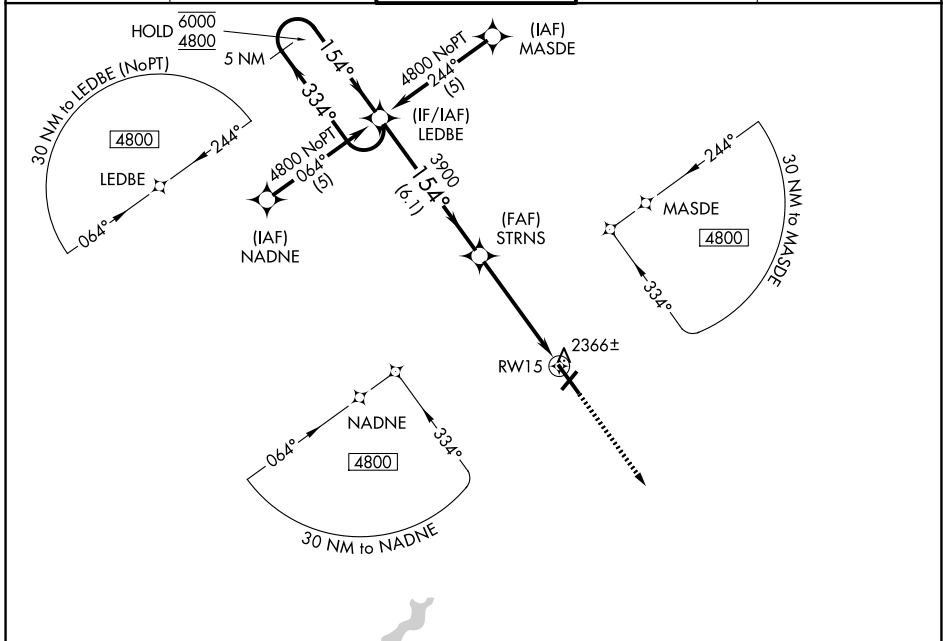


WAAS CH 53513 W15A	APP CRS 154°	Rwy Ldg TDZE Apt Elev	6698 2276 2284
--	------------------------	-----------------------------	---

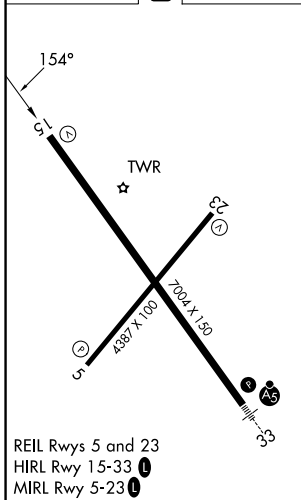
RNAV (GPS) RWY 15

JOHN MURTHA JOHNSTOWN/CAMBRIA COUNTY (JST)

RNP APCH - GPS.		MISSED APPROACH: Climb to 4900 direct COTSO and hold.	
Baro-VNAV NA.			
ATIS 118.325	JOHNSTOWN APP CON ★ 121.2 299.2	JOHNSTOWN TOWER ★ 125.75 (CTAF) 0	GND CON 121.6
		UNICOM 122.95	



ELEV 2284	D	TDZE 2276
-----------	----------	-----------



REIL Rws 5 and 23
HIRL Rwy 15-33
MIRL Rwy 5-23

5 NM Holding Pattern		LEDBE		STRNS		COTSO	
6000 ← 334°		4800 → 154°		3900		4900	
GP 3.00°		TCH 52		3900		*LNAV only	
		6.1 NM		3.8 NM		1.1 NM	
CATEGORY	A	B	C	D			
LPV DA	2526-¾				250 (300-¾)		
LNNAV/VNAV DA	2595-1				319 (400-1)		
LNNAV MDA	2680-1	404 (400-1)	2680-1½ 404 (400-1½)	2680-1¼ 404 (400-1¼)			
CIRCLING	2700-1 416 (500-1)	2880-1 596 (600-1)	2880-1½ 596 (600-1½)	3000-2¼ 716 (800-2¼)			

NE-4, 11 JUN 2026 to 09 JUL 2026

NE-4, 11 JUN 2026 to 09 JUL 2026