

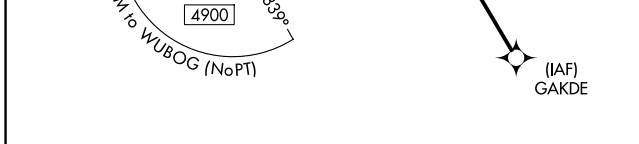
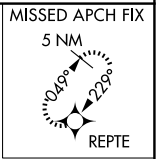
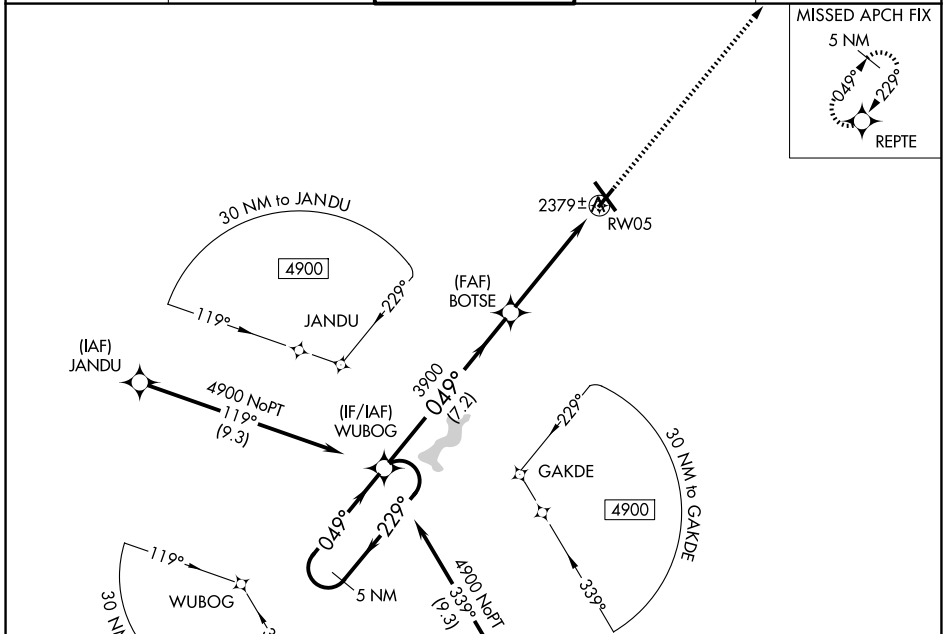
WAAS CH <b>61029</b> <b>W05A</b>	APP CRS <b>049°</b>	Rwy Ldg TDZE Apt Elev	<b>4387</b> <b>2284</b> <b>2284</b>
--	------------------------	-----------------------------	---

# RNAV (GPS) RWY 5

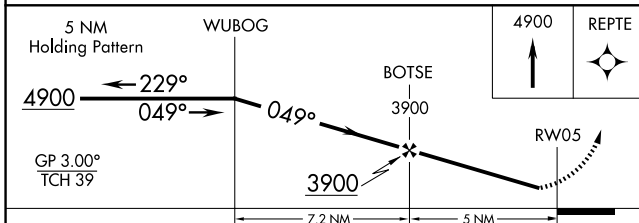
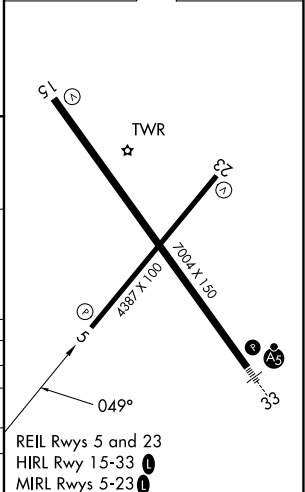
JOHN MURTHA JOHNSTOWN/CAMBRIA COUNTY (JST)

RNP APCH - GPS.		When local altimeter setting not received, procedure NA. For uncompensated Baro-VNAV systems, LNAV/VNAV NA below -19°C or above 29°C. Rwy 5 helicopter visibility reduction below 3/4 SM NA.		MISSED APPROACH: Climb to 4900 direct REPTE and hold.	
-----------------	--	--	--	---	--

ATIS <b>118.325</b>	JOHNSTOWN APP CON * <b>121.2 299.2</b>	JOHNSTOWN TOWER * <b>125.75 (CTAF) 0</b>	GND CON <b>121.6</b>	UNICOM <b>122.95</b>
------------------------	---	---	-------------------------	-------------------------



ELEV 2284	<b>D</b>	TDZE 2284
-----------	----------	-----------



CATEGORY	A	B	C	D
LPV DA		2534-1	250 (300-1)	
LNAV/VNAV DA		2574-1	290 (300-1)	
LNAV MDA		2640-1	356 (400-1)	
CIRCLING	2700-1 416 (500-1)	2880-1 596 (600-1)	2880-1½ 596 (600-1½)	3000-2¼ 716 (800-2¼)

REIL Rwy 5 and 23  
HIRL Rwy 15-33  
MIRL Rwy 5-23

NE-4, 11 JUN 2026 to 09 JUL 2026

NE-4, 11 JUN 2026 to 09 JUL 2026