

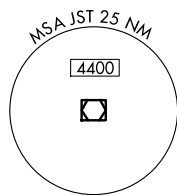
VOR/DME JST <b>113.0</b> Chan 77	APP CRS <b>042°</b>	Rwy Ldg TDZE Apt Elev <b>4387</b> <b>2284</b> <b>2284</b>
--	------------------------	--

# VOR RWY 5

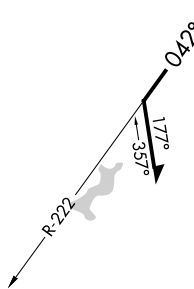
JOHN MURTHA JOHNSTOWN/CAMBRIA COUNTY (JST)

<b>▼</b> <b>▲</b> Rwy 5 helicopter visibility reduction below $\frac{3}{4}$ SM NA.	MISSED APPROACH: Climb to 4200 then left turn direct JST VOR/DME and hold.
---	--

ATIS <b>118.325</b>	JOHNSTOWN APP CON ★ <b>121.2 299.2</b>	JOHNSTOWN TOWER ★ <b>125.75 (CTAF)</b> <b>0</b>	GND CON <b>121.6</b>	UNICOM <b>122.95</b>
------------------------	---	--	-------------------------	-------------------------



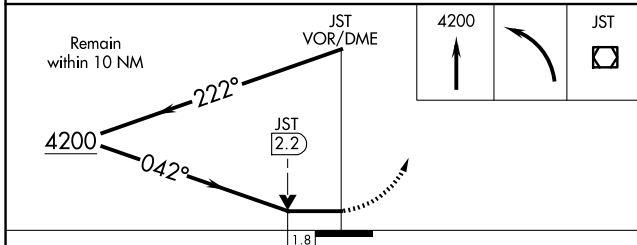
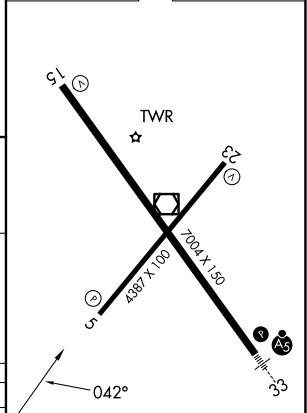
During VFR conditions watch for opposing traffic on JST R-222.



NE-4, 11 JUN 2026 to 09 JUL 2026

NE-4, 11 JUN 2026 to 09 JUL 2026

ELEV 2284	<b>D</b> TDZE 2284
-----------	--------------------



CATEGORY	A	B	C	D
S-5	2880-1 596 (600-1)		2880-1 $\frac{3}{4}$ 596 (600-1 $\frac{3}{4}$ )	
CIRCLING	2880-1 596 (600-1)		2880-1 $\frac{3}{4}$ 596 (600-1 $\frac{3}{4}$ )	3000-2 $\frac{1}{4}$ 716 (800-2 $\frac{1}{4}$ )

REIL Rwy 5 and 23  
HIRL Rwy 15-33 **0**  
MIRL Rwy 5-23 **0**

# VOR RWY 5