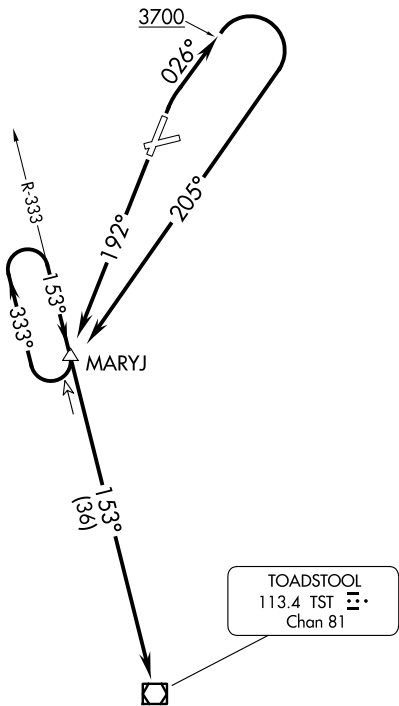


**TOP ALTITUDE:
7000**

DENVER CENTER
127.95 338.2

NOTE: DME required.



TAKEOFF MINIMUMS

Rwys 6, 24: NA - Environmental.

Rwys 1, 19: Standard with minimum climb of 300' per NM to 7000.

NOTE: Chart not to scale.



DEPARTURE ROUTE DESCRIPTION

TAKEOFF RUNWAY 1: Climb heading 026° to 3700, then climbing right turn heading 205° to intercept TST VOR/DME R-333 to TST VOR/DME, thence. . . .

TAKEOFF RUNWAY 19: Climb heading 192° to intercept TST VOR/DME R-333 to TST VOR/DME, thence. . . .

. . . .maintain 7000, expect filed altitude 10 minutes after departure.