

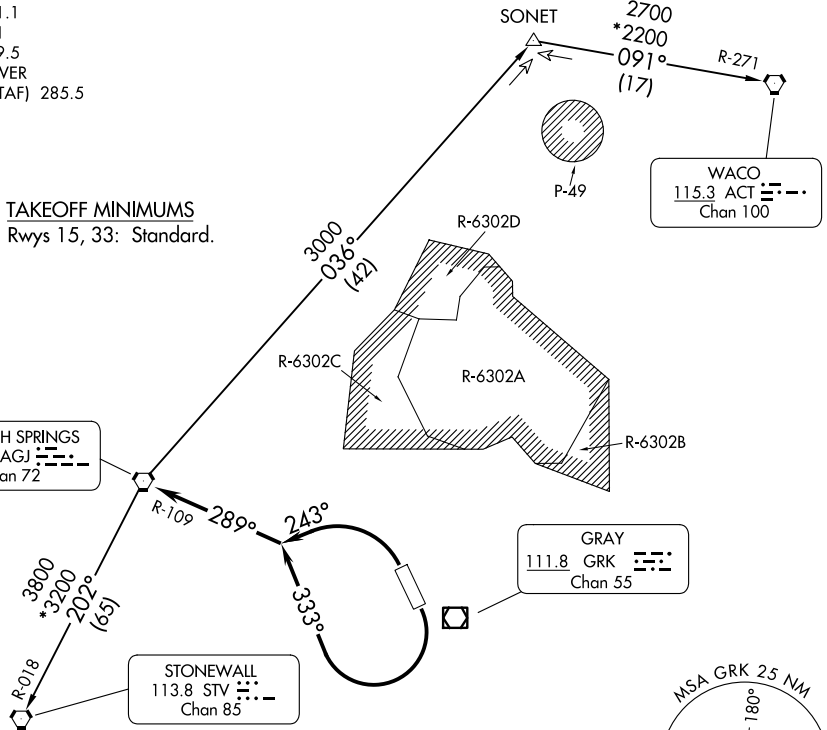
LAMPS NINE DEPARTURE

GRAY DEP CON
120.075 323.15
ATIS
124.9
CLNC DEL
126.2 251.1
GND CON
121.8 279.5
GRAY TOWER
120.75 (CTAF) 285.5

RADAR required.

**TOP ALTITUDE:
ASSIGNED BY ATC**

TAKEOFF MINIMUMS
Rwys 15, 33: Standard.



NOTE: WACO Transition for aircraft inbound to terminal area airports.

NOTE: Chart not to scale.

DEPARTURE ROUTE DESCRIPTION

TAKEOFF RUNWAY 15: Climbing right turn heading 333° to intercept and proceed on AGJ R-109. Thence . . .

TAKEOFF RUNWAY 33: Climbing left turn heading 243° to intercept and proceed on AGJ R-109. Thence . . .

. . . on assigned transition. Maintain ATC assigned altitude, expect filed altitude 10 minutes after departure.

STONEWALL TRANSITION (LAMPS9.STV): From over AGJ VORTAC on AGJ R-202 and STV R-018 to STV VORTAC.

WACO TRANSITION (LAMPS9.ACT): From over AGJ VORTAC on AGJ R-036 to SONET INT, then on ACT R-271 to ACT VORTAC.

LAMPS NINE DEPARTURE

(LAMPS9.AGJ) 14MAY26

FORT HOOD (KILLEEN), TEXAS
ROBERT GRAY AAF (GRK)

SC-3, 11 JUN 2026 to 09 JUL 2026

SC-3, 11 JUN 2026 to 09 JUL 2026

