

WAAS CH <b>82399</b> <b>W33A</b>	APP CRS <b>333°</b>	Rwy Ldg TDZE <b>9803</b> <b>995</b>	Apt Elev <b>1015</b>
--	------------------------	---	-------------------------

# RNAV (GPS) RWY 33

ROBERT GRAY AAF (GRK)

RNP APCH - GPS.

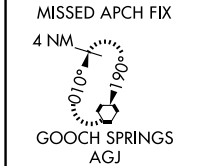
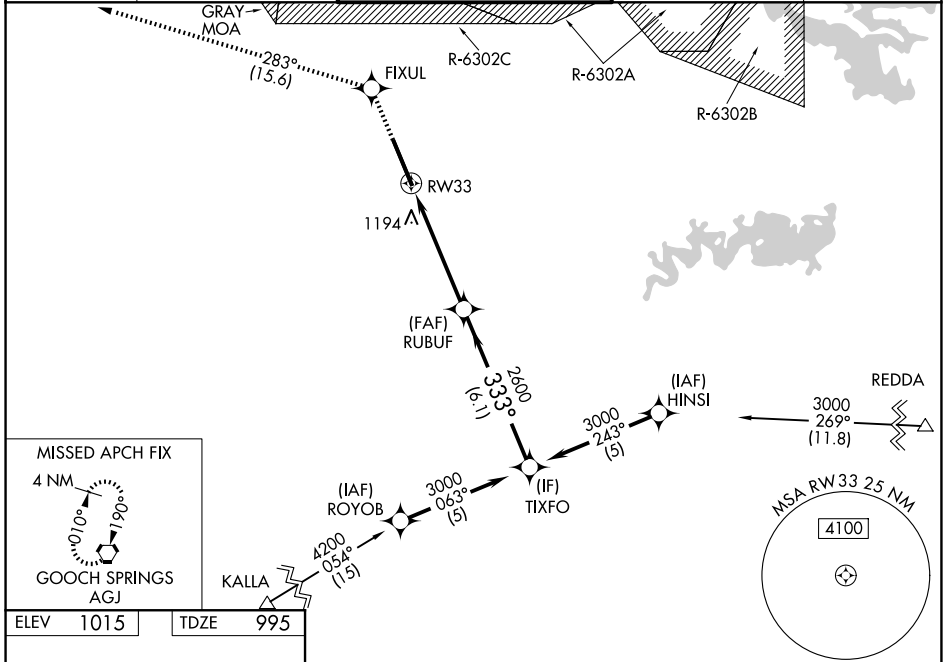
**⚠** For uncompensated Baro-VNAV systems, LNAV/VNAV NA below -17°C or above 54°C. Circling NA west of Rwy 15-33.  
**⚠** For inop ALS, increase LPV Cat E visibility to ¾ SM, LNAV/VNAV Cat E visibility to 2 SM, and LNAV Cat E visibility to 1½ SM.

MALSR

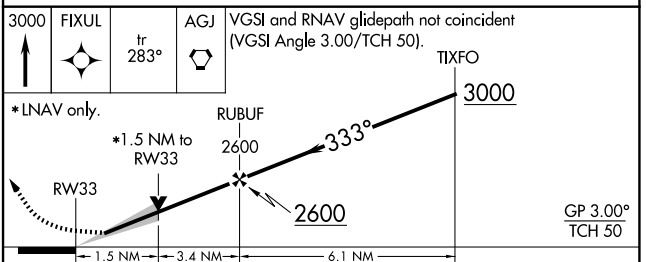
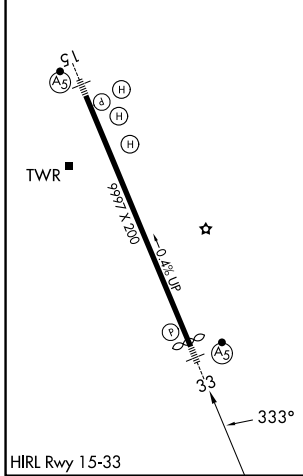


**MISSED APPROACH:** Climb to 3000 direct FIXUL and on track 283° to AGJ VORTAC and hold.

ATIS <b>124.9</b>	GRAY APP CON <b>120.075 323.15</b>	GRAY TOWER <b>120.75(CTAF) 285.5</b>	GND CON <b>121.8 279.5</b>	CLNC DEL <b>126.2 251.1</b>
----------------------	---------------------------------------	---	-------------------------------	--------------------------------



ELEV	1015	TDZE	995
------	------	------	-----



CATEGORY	A	B	C	D	E
LPV DA	1195-½		200 (200-½)		
LNAV/VNAV DA	1552-1½		557 (600-1½)		
LNAV MDA	1460-½	465 (500-½)	1460-1		465 (500-1)
CIRCLING	1540-1	525 (600-1)	1560-1½ 545 (600-1½)	1620-2 605 (700-2)	1740-2½ 725 (800-2½)

SC-3, 11 JUN 2026 to 09 JUL 2026

SC-3, 11 JUN 2026 to 09 JUL 2026