

RNAV (GPS) RWY 32

MONMOUTH EXEC (BLM)

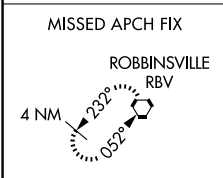
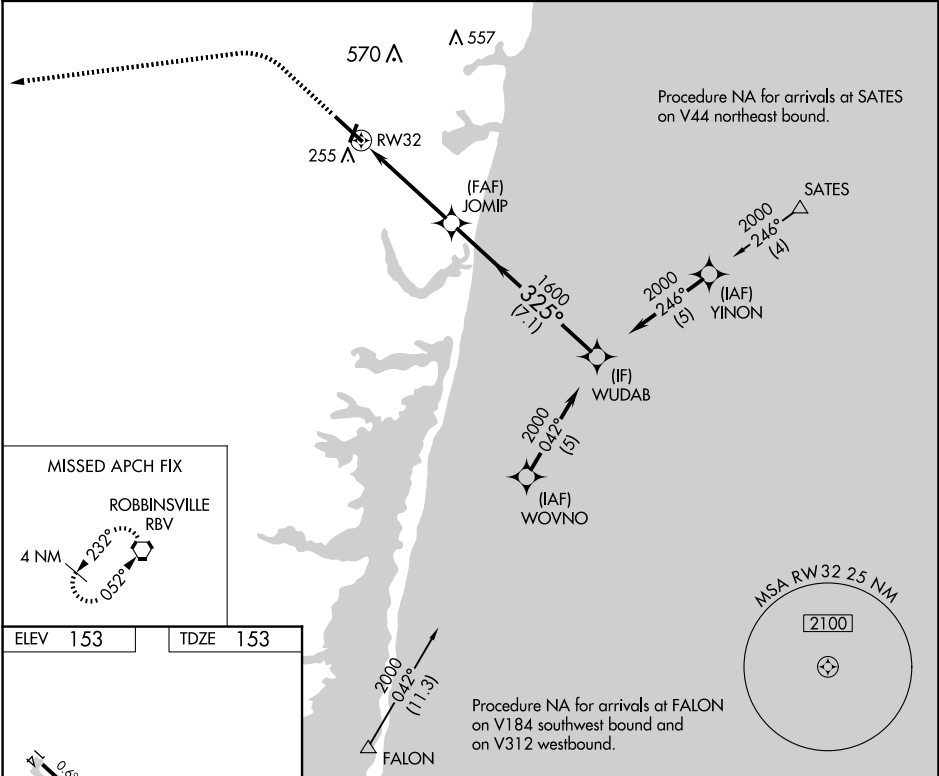
APP CRS	Rwy Idg	7345
325°	TDZE	153
	Apt Elev	153

RNP APCH.

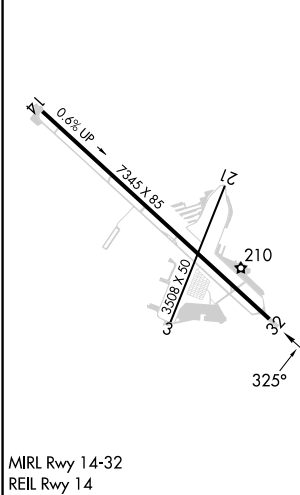
▼ Circling Rwy 3, 21 NA at night. Rwy 32 helicopter visibility reduction below 3/4 SM NA.
▲ When local altimeter setting not received, use Lakehurst altimeter setting and increase all MDA 40 feet; increase LNAV Cat C/D and Circling Cat C/D visibility 1/4 SM.

MISSED APPROACH:
 Climb to 600 then climbing left turn to 2000 direct RBV VORTAC and hold.

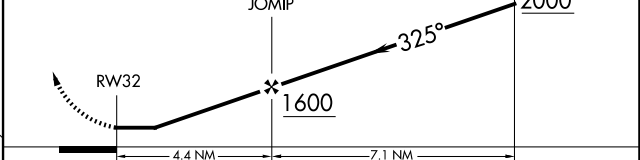
AWOS-3PT 121.625	MC GUIRE APP CON 126.475 363.8	CLNC DEL 126.15	UNICOM 123.0 (CTAF)
----------------------------	--	---------------------------	-------------------------------



ELEV 153	TDZE 153
----------	----------



600	2000	RBV	Visual Segment - Obstacles.
↑	↩	◡	



CATEGORY	A	B	C	D
LNAV MDA	560-1	407 (500-1)	560-1 1/8	407 (500-1 1/8)
CIRCLING	560-1 407 (500-1)	620-1 467 (500-1)	880-2 727 (800-2)	880-2 1/4 727 (800-2 1/4)

NE-2, 11 JUN 2026 to 09 JUL 2026

NE-2, 11 JUN 2026 to 09 JUL 2026