

WAAS CH 78572 W32A	APP CRS 324°	Rwy Idg 7345 TDZE 153 Apt Elev 153
--	------------------------	---

RNAV (GPS) Z RWY 32

MONMOUTH EXEC (BLM)

RNP APCH - GPS.

⚠ For uncompensated Baro-VNAV systems, LNAV/VNAV NA below -15°C or above 54°C.
⚠ Rwy 32 helicopter visibility reduction below 3/4 SM NA. When local altimeter setting not received, use Lakehurst altimeter setting and increase LPV DA to 442 feet, increase LNAV/VNAV DA to 442 feet. Baro-VNAV NA when using Lakehurst altimeter setting.

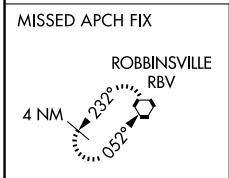
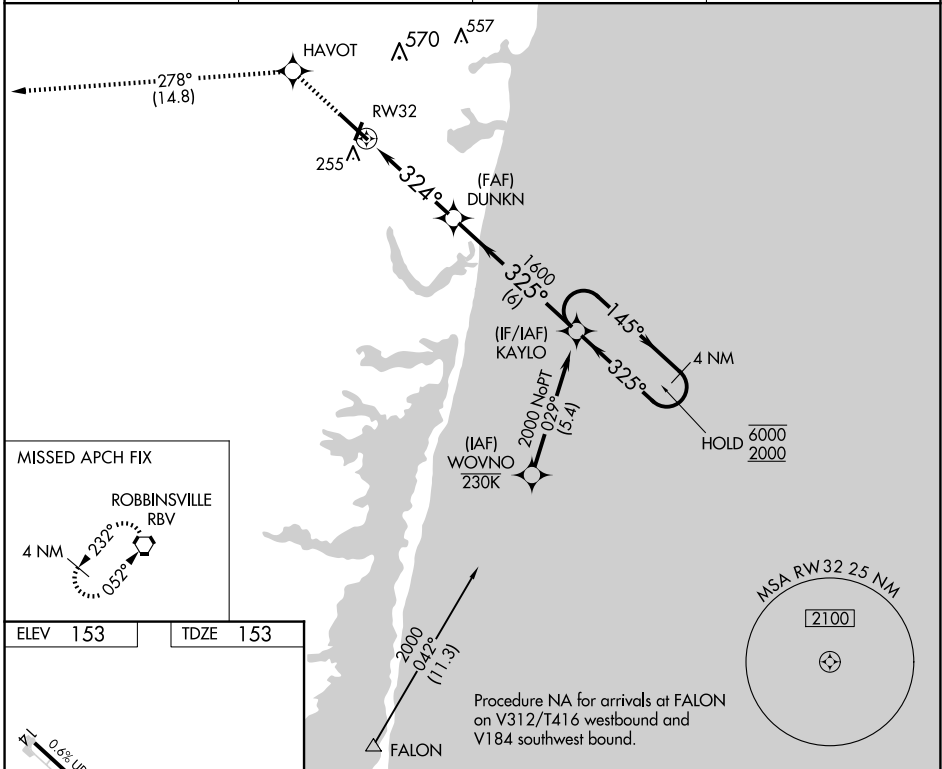
MISSED APPROACH:
 Climb to 2000 direct HAVOT, track 278° to RBV VORTAC and hold.

AWOS-3PT
121.625

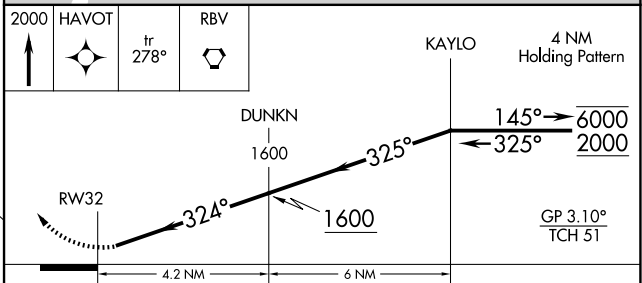
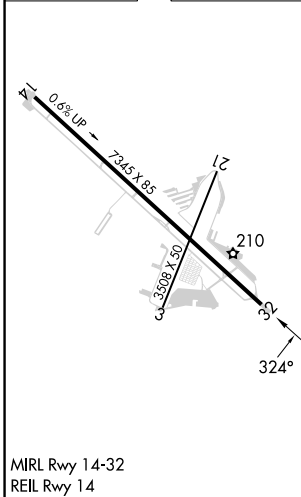
MC GUIRE APP CON
126.475 363.8

CLNC DEL
126.15

UNICOM
123.0 (CTAF)



ELEV 153	TDZE 153
----------	----------



CATEGORY	A	B	C	D
LPV DA		403-1	250 (300-1)	
LNAV/VNAV DA		403-1	250 (300-1)	

NE-2, 11 JUN 2026 to 09 JUL 2026

NE-2, 11 JUN 2026 to 09 JUL 2026