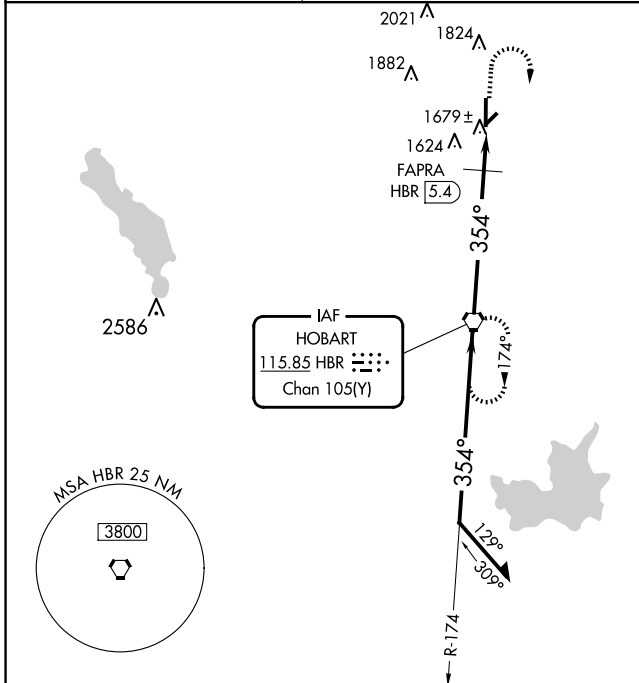


VORTAC HBR 115.85 Chan 105(Y)	APP CRS 354°	Rwy Idg TDZE Apt Elev	5507 1561 1563
--	------------------------	-----------------------------	---

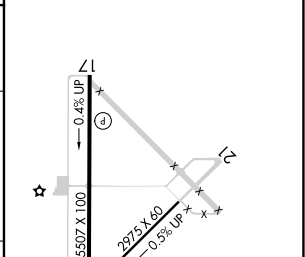
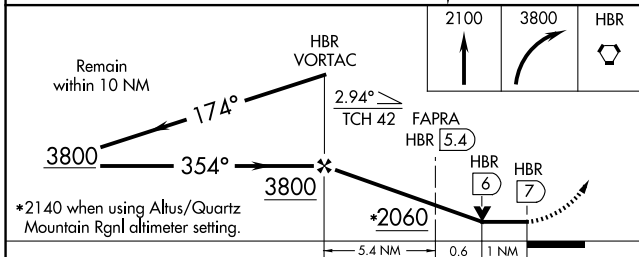
VOR RWY 35

HOBART RGNL (HBR)

<p>⚠ When local altimeter setting not received, use Altus/Quartz Mountain Rgnl altimeter setting and increase all MDAs 80 feet, increase S-35 Cats C/D and Circling Cat C visibility ¼ SM, increase FAPRA fix minimums S-35 Cats C/D and Circling Cat C visibility ¼ SM. VDP NA when using Altus/Quartz Mountain Rgnl altimeter setting.</p>	<p>MISSED APPROACH: Climb to 2100, then climbing right turn to 3800 direct HBR VORTAC and hold.</p>	
<p>ASOS 133.325</p>	<p>ALTUS APP CON ★ 125.1 353.7</p>	<p>UNICOM 122.8 (CTAF)</p>



ELEV 1563	TDZE 1561
-----------	-----------



CATEGORY	A	B	C	D
S-35	2060-1	499 (500-1)	2060-1¼ 499 (500-1¼)	2060-1½ 499 (500-1½)
CIRCLING	2060-1	497 (500-1)	2320-2¼ 757 (800-2¼)	2460-3 897 (900-3)
FAPRA FIX MINIMUMS				
S-35	1980-1	419 (500-1)	1980-1¼	419 (500-1¼)
CIRCLING	1980-1 417 (500-1)	2020-1 457 (500-1)	2320-2¼ 757 (800-2¼)	2460-3 897 (900-3)

FAF to MAP 7 NM	
Knots	60 90 120 150 180
Min:Sec	7:00 4:40 3:30 2:48 2:20

SC-1, 11 JUN 2026 to 09 JUL 2026

SC-1, 11 JUN 2026 to 09 JUL 2026