

# HI-ILS Y or LOC Y RWY 13R

LOC/DME I-NQI <b>110.9</b> Chan <b>46</b>	APCH CRS <b>130°</b>	Rwy Ildg TDZE Arpt Elev <b>8000</b> <b>50</b> <b>50</b>
---	-------------------------	--

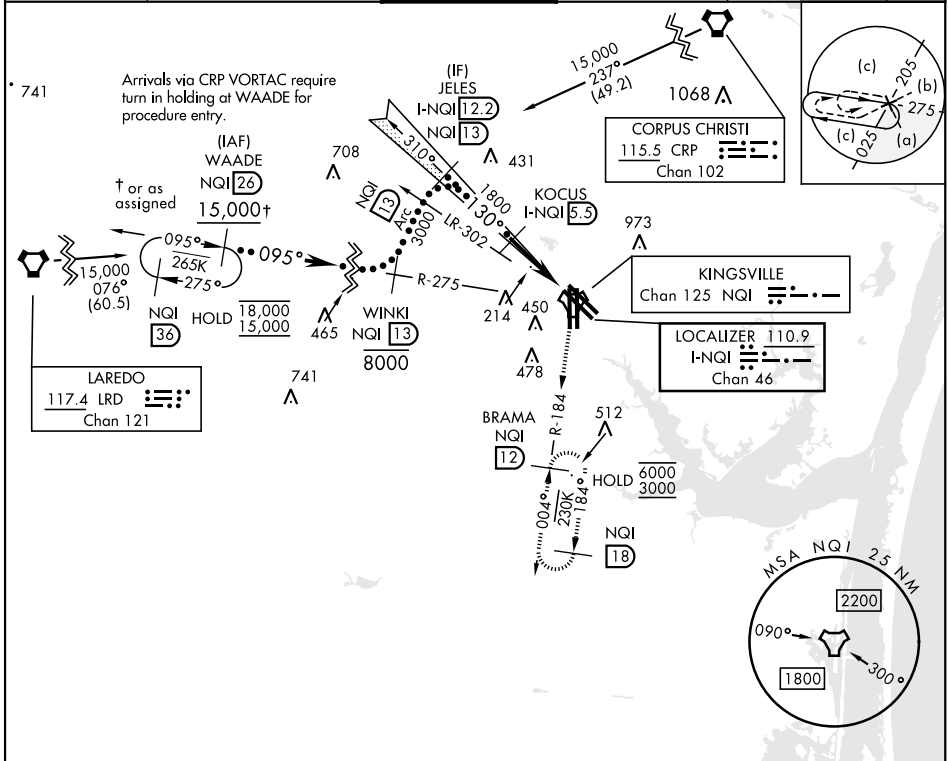
[USN]

KINGSVILLE NAS (KNQI)

TACAN required

MISSED APPROACH: Climb to 500 then climbing right turn to 3000 and intercept NQI TACAN R-184 to BRAMA and hold.

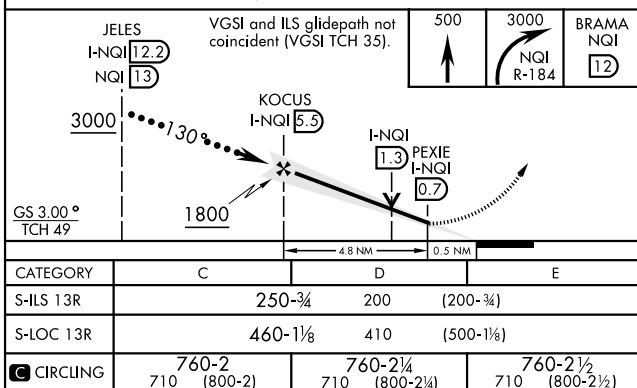
ATIS ★ <b>282.25</b>	APP CON <b>119.9 290.45</b>	TOWER ★ <b>124.1 377.05</b>	GND CON <b>239.05</b>	CLNC DEL <b>328.4</b>	ASR/ PAR
-------------------------	--------------------------------	--------------------------------	--------------------------	--------------------------	-------------



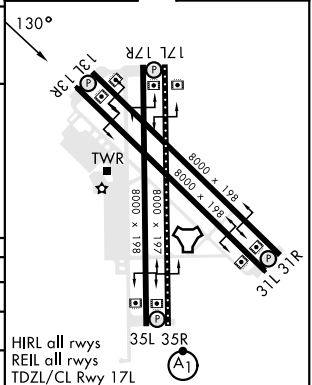
SC-3, 11 JUN 2026 to 09 JUL 2026

SC-3, 11 JUN 2026 to 09 JUL 2026

EMERG SAFE ALT 100 NM 16,200



ELEV	50	TDZE	50
------	----	------	----



# HI-ILS Y or LOC Y RWY 13R