

TACAN RWY 17L

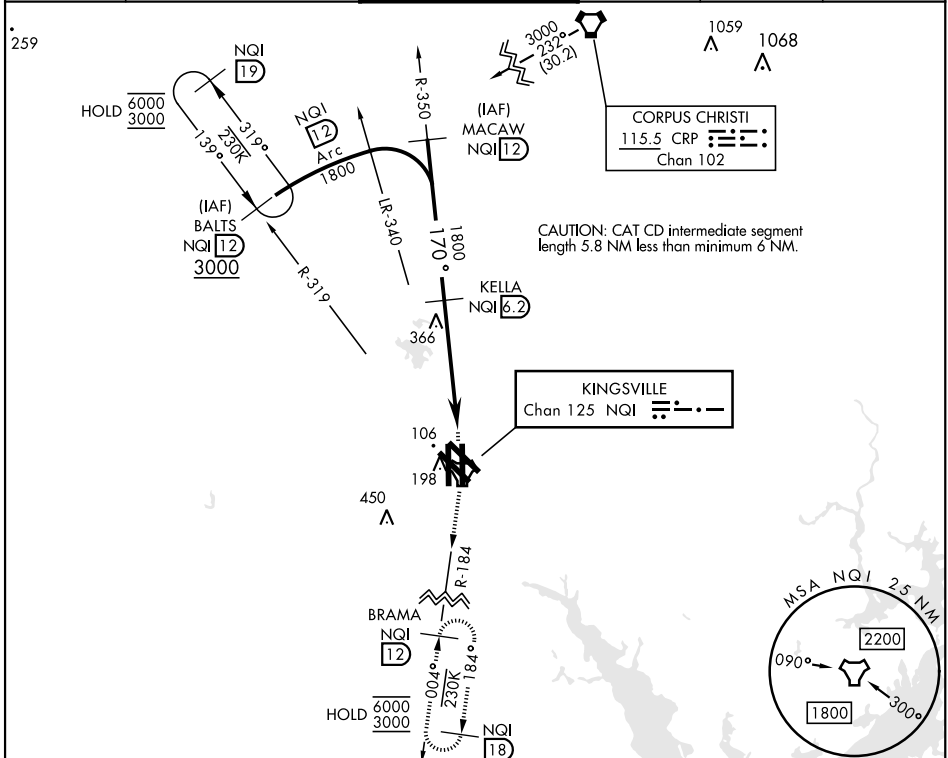
TACAN NQI Chan 125	APCH CRS 170°	Rwy Ldg TDZE Arprt Elev 8000 49 50
------------------------------	-------------------------	--

[USN]

KINGSVILLE NAS (KNQI)

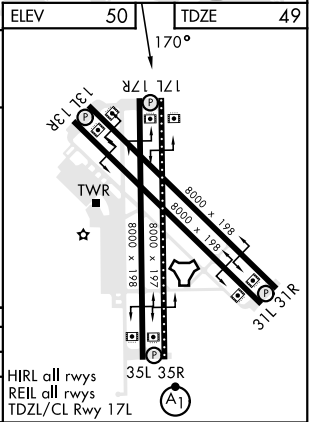
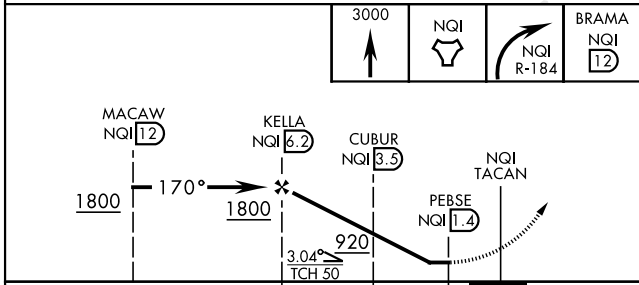
MISSED APPROACH: Climb to 3000 direct NQI TACAN and climbing right turn to intercept NQI R-184 to BRAMA and hold.

ATIS ★ 282.25	APP CON 119.9 290.45	TOWER ★ 124.1 377.05	GND CON 239.05	CLNC DEL 328.4	ASR/PAR
-------------------------	--------------------------------	--------------------------------	--------------------------	--------------------------	---------



CAUTION: CAT CD intermediate segment length 5.8 NM less than minimum 6 NM.

EMERG SAFE ALT 100 NM 16,200	ELEV 50	TDZE 49
------------------------------	---------	---------



CATEGORY	A	B	C	D
S-17L		360-1	311 (400-1)	
CIRCLING	540-1	490 (500-1)	760-2 710 (800-2)	760-2 1/4 710 (800-2 1/4)

TACAN RWY 17L

SC-3, 11 JUN 2026 to 09 JUL 2026

SC-3, 11 JUN 2026 to 09 JUL 2026