

TACAN Y RWY 17R

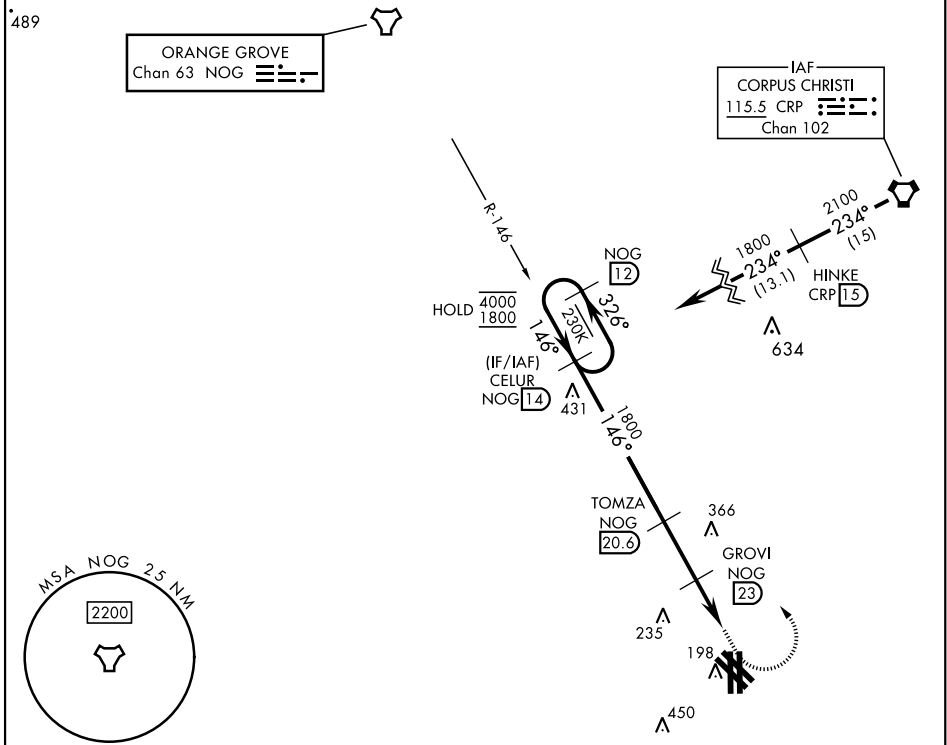
TACAN Chan 63	NOG	APCH CRS 146°	Rwy Idg TDZE Arprt Elev	8000 49 50
-------------------------	-----	-------------------------	-------------------------------	---------------------------------------

[USN]

KINGSVILLE NAS (KNQI)

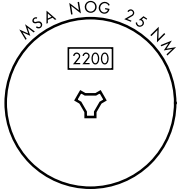
MISSED APPROACH: Climbing left turn to 1800, intercept NOG TACAN R-146 to CELUR and hold.

ATIS ★ 282.25	APP CON 119.9 290.45	TOWER ★ 124.1 377.05	GND CON 239.05	CLNC DEL 328.4	ASR/PAR
-------------------------	--------------------------------	--------------------------------	--------------------------	--------------------------	---------

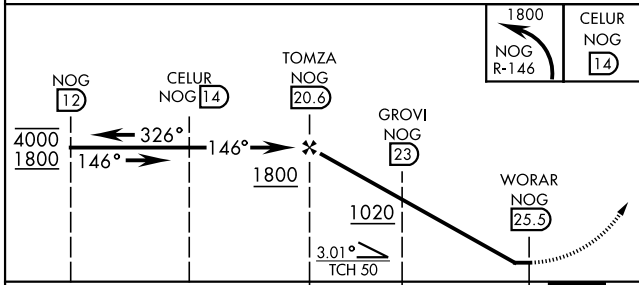


ORANGE GROVE
Chan 63 NOG

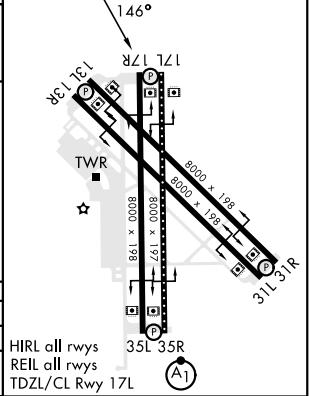
IAF
CORPUS CHRISTI
115.5 CRP
Chan 102



EMERG SAFE ALT 100 NM 16,200



ELEV	50	TDZE	49
------	----	------	----



CATEGORY	A	B	C	D
S-17R	520-1 471 (500-1)	520-1 471 (500-1)	520-1 471 (500-1)	520-1 471 (500-1)
CIRCLING	540-1 490 (500-1)	540-1 490 (500-1)	540-1 490 (500-1)	540-1 490 (500-1)

HIRL all rws
REIL all rws
TDZL/CL Rwy 17L

TACAN Y RWY 17R

SC-3, 11 JUN 2026 to 09 JUL 2026

SC-3, 11 JUN 2026 to 09 JUL 2026