

WAAS CH <b>42723</b> <b>W13A</b>	APP CRS <b>128°</b>	Rwy Ldg TDZE Apt Elev	<b>4102</b> <b>402</b> <b>403</b>
--	------------------------	-----------------------------	---

# RNAV (GPS) RWY 13

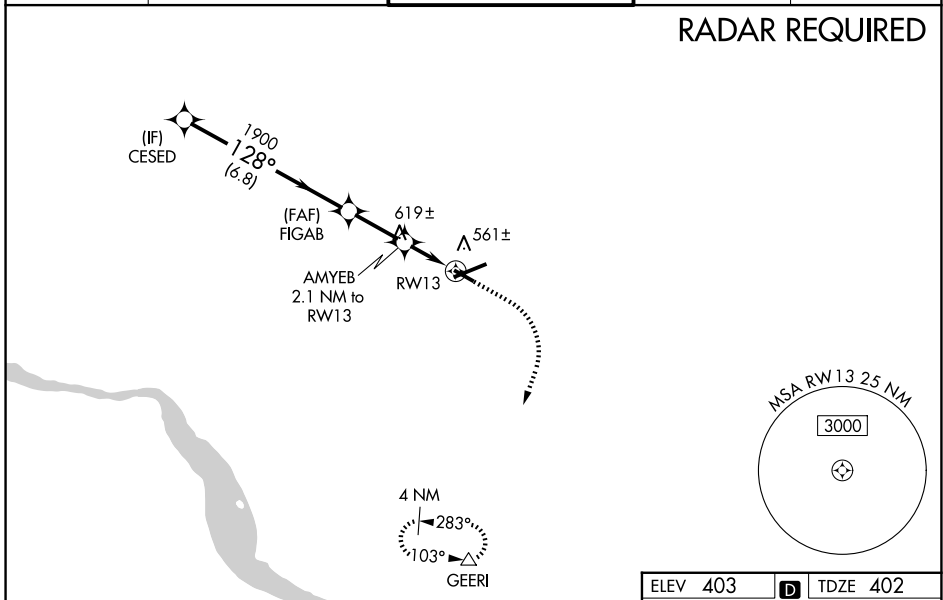
LANCASTER (LNS)

**⚠** Night landing: Rwy 13, 31 NA. Baro-VNAV NA when using Harrisburg Intl altimeter setting. For uncompensated Baro-VNAV systems, LNAV/VNAV NA below -15°C (5°F) or above 31°C (87°F). DME/DME RNP-0.3 NA. Helicopter visibility reduction below 1 SM NA. When local altimeter setting not received, use Harrisburg Intl altimeter setting and increase all DA 64 feet and all MDA 80 feet, increase LPV and LNAV/VNAV visibility all Cats 1/8, and LNAV and Circling Cats C and D 1/4.

**MISSED APPROACH:**  
Climb to 900 then climbing right turn to 3000 direct GEERI and hold

ATIS <b>125.675</b>	HARRISBURG APP CON <b>126.45 281.525</b>	<b>LANCASTER TOWER *</b> <b>120.9 (CTAF) 251.1</b>	GND CON <b>121.8</b>	UNICOM <b>122.95</b>
------------------------	---	---	-------------------------	-------------------------

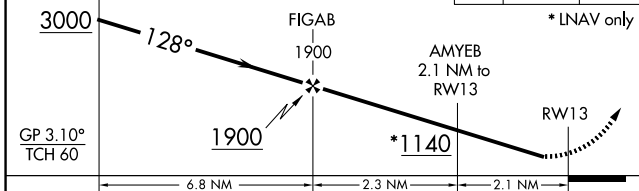
## RADAR REQUIRED



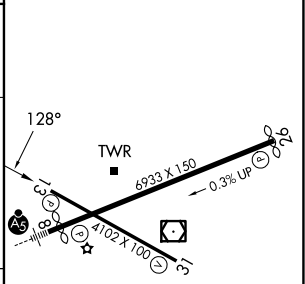
NE-4, 11 JUN 2026 to 09 JUL 2026

NE-4, 11 JUN 2026 to 09 JUL 2026

VGSI and RNAV glidepath not coincident (VGSI Angle 3.00/TCH 40).  
 900 3000 GEERI  
 ↑ ↪ △



ELEV 403	<b>D</b>	TDZE 402
----------	----------	----------



CATEGORY	A	B	C	D
LPV DA		687-1	285 (300-1)	
LNAV/VNAV DA		894-1 5/8	492 (500-1 5/8)	
LNAV MDA	880-1 478 (500-1)		880-1 3/8 478 (500-1 3/8)	
CIRCLING	940-1 537 (600-1)		960-1 1/2 557 (600-1 1/2)	1060-2 657 (700-2)

REIL Rwy 31  
 HIRL Rwy 8-26  
 MIRL Rwy 13-31