

WAAS CH 48823 W31A	APP CRS 308°	Rwy Ldg 4102 TDZE 403 Apt Elev 403
--	------------------------	---

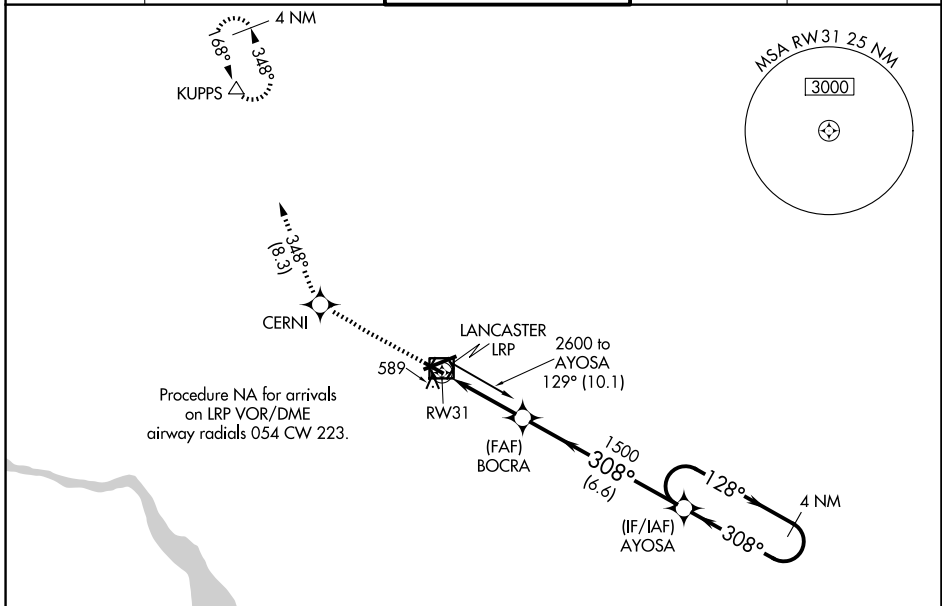
RNAV (GPS) RWY 31

LANCASTER (LNS)

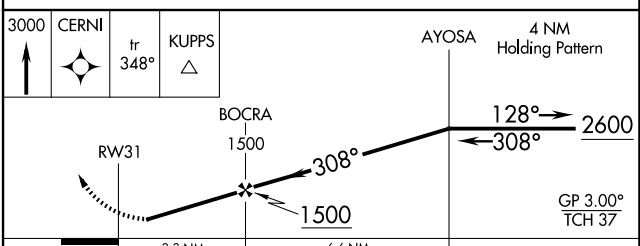
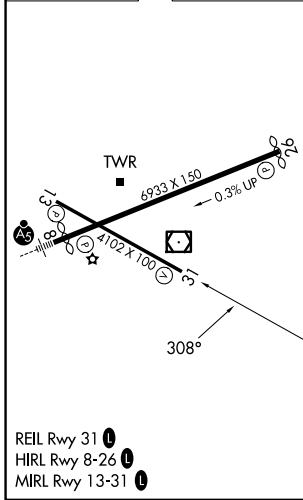
⚠ Night landing: Rwy 13, 31 NA. For uncompensated Baro-VNAV systems, LNAV/VNAV NA below -15°C (5°F) or above 42°C (107°F). DME/DME RNP-0.3 NA. Helicopter visibility reduction below 1 SM NA. When local altimeter setting not received, use Harrisburg Intl altimeter setting and increase all DA 64 feet and all MDA 80 feet, increase LNAV/VNAV visibility all Cats and LNAV and Circling Cat C/D visibility ¼. Baro-VNAV NA when using Harrisburg Intl altimeter setting.

MISSED APPROACH:
Climb to 3000 direct CERNI and on track 348° to KUPPS and hold.

ATIS 125.675	HARRISBURG APP CON 126.45 281.525	LANCASTER TOWER ★ 120.9 (CTAF) 251.1	GND CON 121.8	UNICOM 122.95
------------------------	---	--	-------------------------	-------------------------



ELEV 403	D	TDZE 403
-----------------	----------	-----------------



CATEGORY	A	B	C	D
LPV DA	653-1		250 (300-1)	
LNAV/VNAV DA	774-1¼		371 (400-1¼)	
LNAV MDA	840-1	437 (500-1)	840-1⅓	437 (500-1⅓)
CIRCLING	940-1	537 (600-1)	960-1½	1060-2
			557 (600-1½)	657 (700-2)

NE-4, 11 JUN 2026 to 09 JUL 2026

NE-4, 11 JUN 2026 to 09 JUL 2026