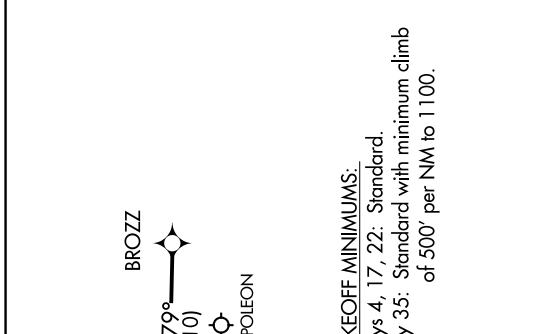
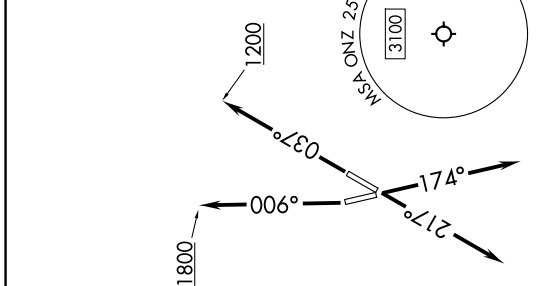


EC-1, 11 JUN 2026 to 09 JUL 2026

DETROIT DEP CON  
134.3 284.0  
AWOS-3P  
119.675  
CTAF  
123.0



**TAKEOFF MINIMUMS:**  
 Rvys 4, 17, 22: Standard.  
 Rwy 35: Standard with minimum climb  
 of 500' per NM to 1100.

**TOP ALTITUDE:  
 ASSIGNED BY ATC**

RNAV 1 - DME/DME/IRU or GPS.  
 RADAR required.

ZEGBI 9000  
 \*2500  
 278° (31) → CCOBB → 279° (10) → BROZZ → NAPOLEON

**NOTE:** Turbojet departures at/above 10000, maintain 280K until advised by ATC.  
**NOTE:** For use by aircraft filed at or below FL220, or as assigned by ATC.  
**NOTE:** CAUTION: Parachute jumping 6 NM SW of BROZZ, 3 NM radius of Napoleon Airport (3NP) at or below 17999 (SR-SS).

**NOTE:** Chart not to scale.

**DEPARTURE ROUTE DESCRIPTION**

**TAKEOFF RUNWAY 4:** Climb on heading 037° to 1200 then as assigned by ATC, thence....  
**TAKEOFF RUNWAY 17:** Climb on heading 174° or as assigned by ATC, thence....  
**TAKEOFF RUNWAY 22:** Climb on heading 217° or as assigned by ATC, thence....  
**TAKEOFF RUNWAY 35:** Climb on heading 006° to 1800 then as assigned by ATC, thence....

....for RADAR vectors to BROZZ, then on track 279° to CCOBB, then on (transition).  
 Maintain ATC assigned altitude, expect filed altitude 10 minutes after departure.

ZEGBI TRANSITION (CCOBB3\_ZEGBI):

EC-1, 11 JUN 2026 to 09 JUL 2026