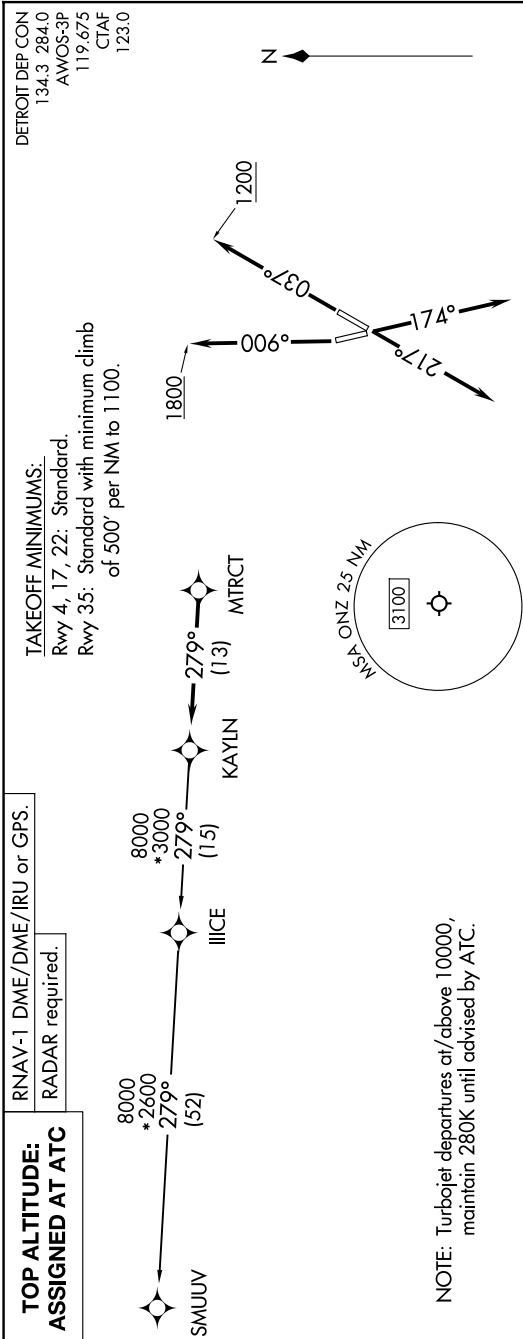


(KAYLN3.KAYLN) 26078

# KAYLN THREE DEPARTURE (RNAV)

AL-940 (FAA)

GROSSE ILE MUNI (ONZ)  
DETROIT/GROSSE ILE, MICHIGAN



**TAKEOFF MINIMUMS:**  
 Rwy 4, 17, 22: Standard.  
 Rwy 35: Standard with minimum climb of 500' per NM to 1100.

**RNAV-1 DME/DME/IRU or GPS.**  
**RADAR required.**

**TOP ALTITUDE: ASSIGNED AT ATC**

DETROIT DEP CON  
 134.3 284.0  
 AWOS-3P  
 119.675  
 CTAF  
 123.0

NOTE: Turbojet departures at/above 10000, maintain 280K until advised by ATC.

NOTE: Chart not to scale.

## DEPARTURE ROUTE DESCRIPTION

**TAKEOFF RUNWAY 4:** Climb on heading 037° to 1200 then as assigned by ATC, thence....  
**TAKEOFF RUNWAY 17:** Climb on heading 174° or as assigned by ATC, thence....  
**TAKEOFF RUNWAY 22:** Climb on heading 217° or as assigned by ATC, thence....  
**TAKEOFF RUNWAY 35:** Climb on heading 006° to 1800 then as assigned by ATC, thence....  
 ....for RADAR vectors to MTRCT, then on track 279° to KAYLN, then on (transition). Maintain ATC assigned altitude, expect filed altitude 10 minutes after departure.  
**SMUUV TRANSITION (KAYLN3.SMUUV):**

KAYLN THREE DEPARTURE (RNAV)  
 (KAYLN3.KAYLN) 16MAY24

DETROIT/GROSSE ILE, MICHIGAN  
 GROSSE ILE MUNI (ONZ)