

(ZETTR4.ZETTR) 26078

ZETTR FOUR DEPARTURE (RNAV)

AL-940 (FAA)

GROSSE ILE MUNI (ONZ)
DETROIT/GROSSE ILE, MICHIGAN

DETROIT DEP CON
134.3 284.0
AWOS-3P
119.675
CTAF
123.0

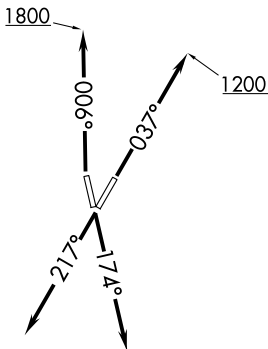
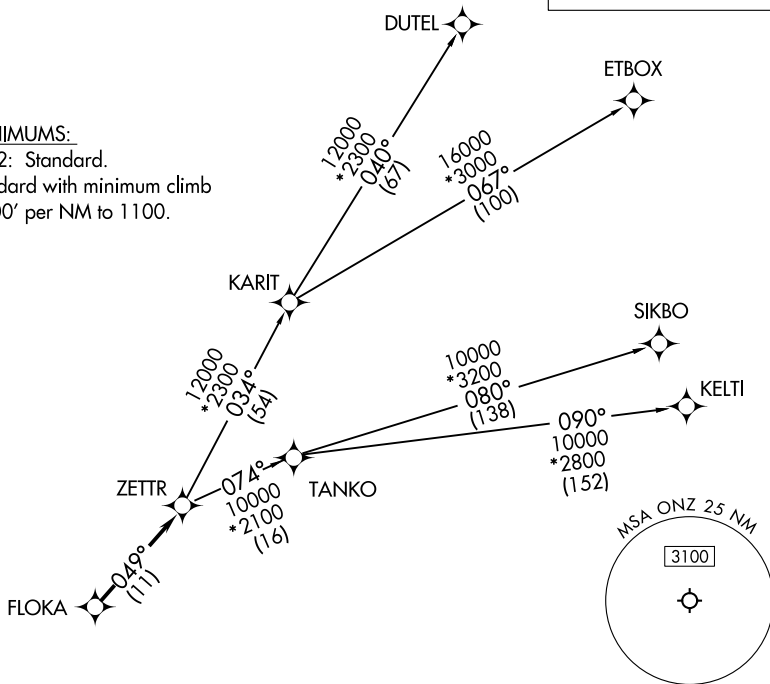
RNAV 1 - DME/DME/IRU or GPS.
RADAR required.

**TOP ALTITUDE:
ASSIGNED BY ATC**

TAKEOFF MINIMUMS:

Rwys 4, 17, 22: Standard.

Rwy 35: Standard with minimum climb
of 500' per NM to 1100.



NOTE: Turbojet departures at/above 10000, maintain 280K until advised by ATC.
NOTE: TANKO Transition: For use by CYYZ area arrivals only, or as assigned by ATC.

NOTE: Chart not to scale.

DEPARTURE ROUTE DESCRIPTION

TAKEOFF RUNWAY 4: Climb on heading 037° to 1200 then as assigned by ATC, thence....

TAKEOFF RUNWAY 17: Climb on heading 174° or as assigned by ATC, thence....

TAKEOFF RUNWAY 22: Climb on heading 217° or as assigned by ATC, thence....

TAKEOFF RUNWAY 35: Climb on heading 006° to 1800 then as assigned by ATC, thence....

....for RADAR vectors to FLOKA, then on track 049° to ZETTR, then on (transition). Maintain ATC assigned altitude, expect filed altitude 10 minutes after departure.

DUTEL TRANSITION (ZETTR4.DUTEL):

ETBOX TRANSITION (ZETTR4.ETBOX):

KELTI TRANSITION (ZETTR4.KELTI):

SIKBO TRANSITION (ZETTR4.SIKBO):

TANKO TRANSITION (ZETTR4.TANKO):

ZETTR FOUR DEPARTURE (RNAV)
(ZETTR4.ZETTR) 16MAY24

DETROIT/GROSSE ILE, MICHIGAN
GROSSE ILE MUNI (ONZ)

EC-1, 11 JUN 2026 to 09 JUL 2026

EC-1, 11 JUN 2026 to 09 JUL 2026