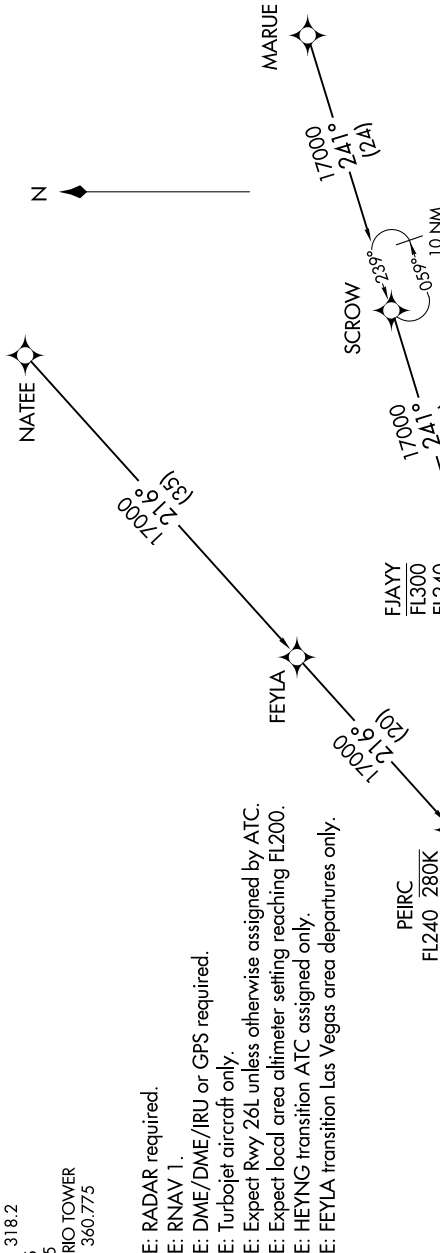


9200 UNT 60 of 9200 UNT 11 'E-WS

SOCAL APP CON  
127.0 318.2  
D-ATIS  
124.25  
ONTARIO TOWER  
120.6 360.775

NOTE: RADAR required.  
NOTE: RNAV 1.  
NOTE: DME/DME/IRU or GPS required.  
NOTE: Turbojet aircraft only.  
NOTE: Expect local area altimeter setting FL200.  
NOTE: HEYNG transition ATC assigned only.  
NOTE: FEYLA transition Las Vegas area departures only.



NOTE: Chart not to scale.

FEYLA TRANSITION (FEYLA.JCKIE2)  
HEYNG TRANSITION (HEYNG.JCKIE2)  
MARUE TRANSITION (MARUE.JCKIE2)  
NATEE TRANSITION (NATEE.JCKIE2)

(CONTINUED ON FOLLOWING PAGE)

JCKIE  
FL190  
17000

See following page for arrival route.