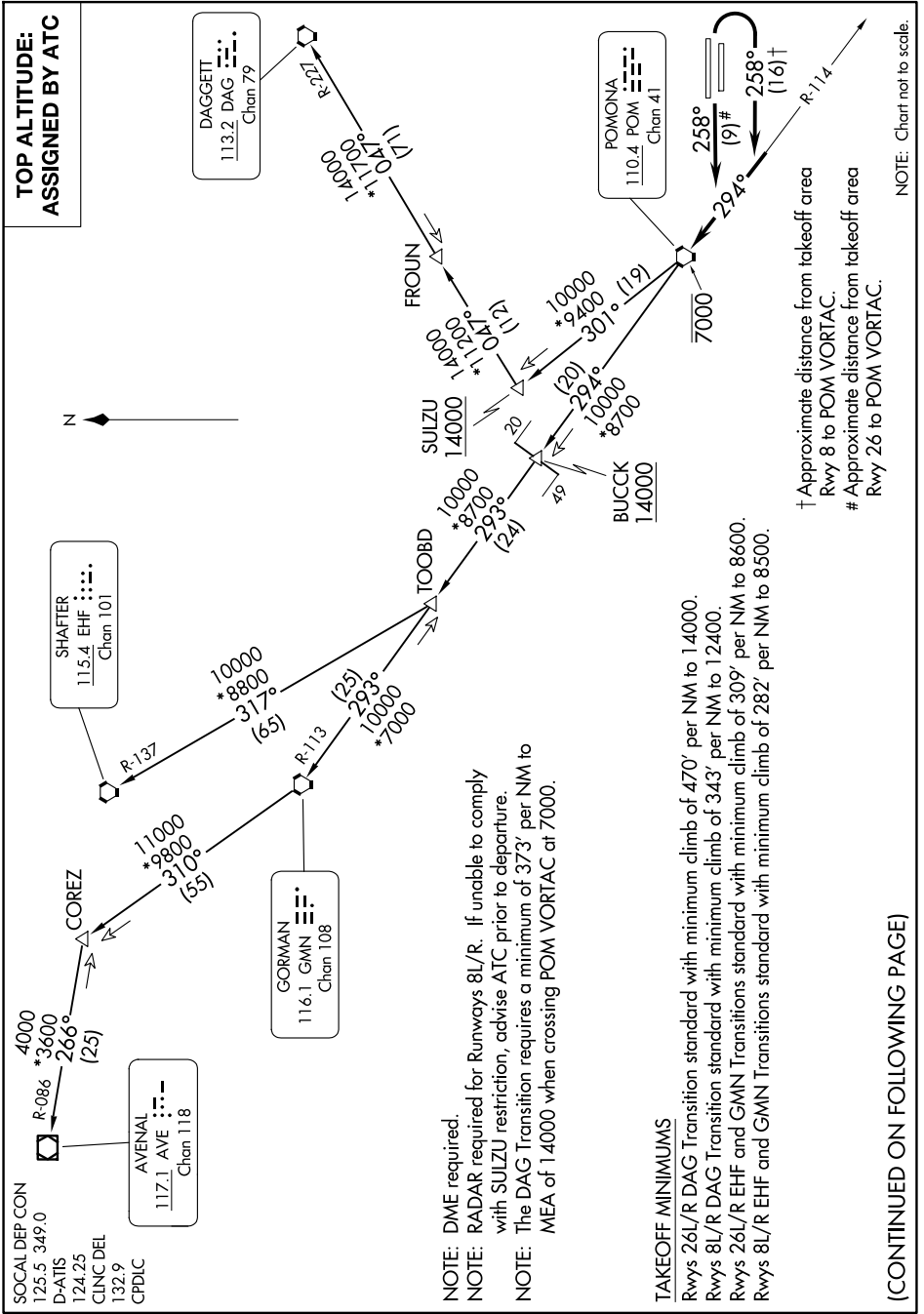


POMONA ONE DEPARTURE

AL-965 (FAA)

ONTARIO INTL (ONT)
ONTARIO, CALIFORNIA

SW-3, 11 JUN 2026 to 09 JUL 2026



POMONA ONE DEPARTURE

ONTARIO, CALIFORNIA
ONTARIO INTL (ONT)

SW-3, 11 JUN 2026 to 09 JUL 2026

(CONTINUED ON FOLLOWING PAGE)

NOTE: Chart not to scale.

† Approximate distance from takeoff area
Rwy 8 to POM VORTAC.
Approximate distance from takeoff area
Rwy 26 to POM VORTAC.

NOTE: DME required.

NOTE: RADAR required for Runways 8L/R. If unable to comply with SULZU restriction, advise ATC prior to departure.

NOTE: The DAG Transition requires a minimum of 373' per NM to MEA of 14000 when crossing POM VORTAC at 7000.

TAKEOFF MINIMUMS

Rwys 26L/R DAG Transition standard with minimum climb of 470' per NM to 14000.

Rwys 8L/R DAG Transition standard with minimum climb of 343' per NM to 12400.

Rwys 26L/R EHF and GMN Transitions standard with minimum climb of 309' per NM to 8600.

Rwys 8L/R EHF and GMN Transitions standard with minimum climb of 282' per NM to 8500.